

Hardin County, Iowa
 Horizontal Datum: **NAD 83(NA2011)** - Vertical Datum: **NAVD 1988**
 Iowa State Plane North Zone (1401)
 Iowa Regional Coordinate System, Zone 4, Sioux City-Iowa Falls LCC
 US Survey Feet
9/30/18

Point Name: **8070**

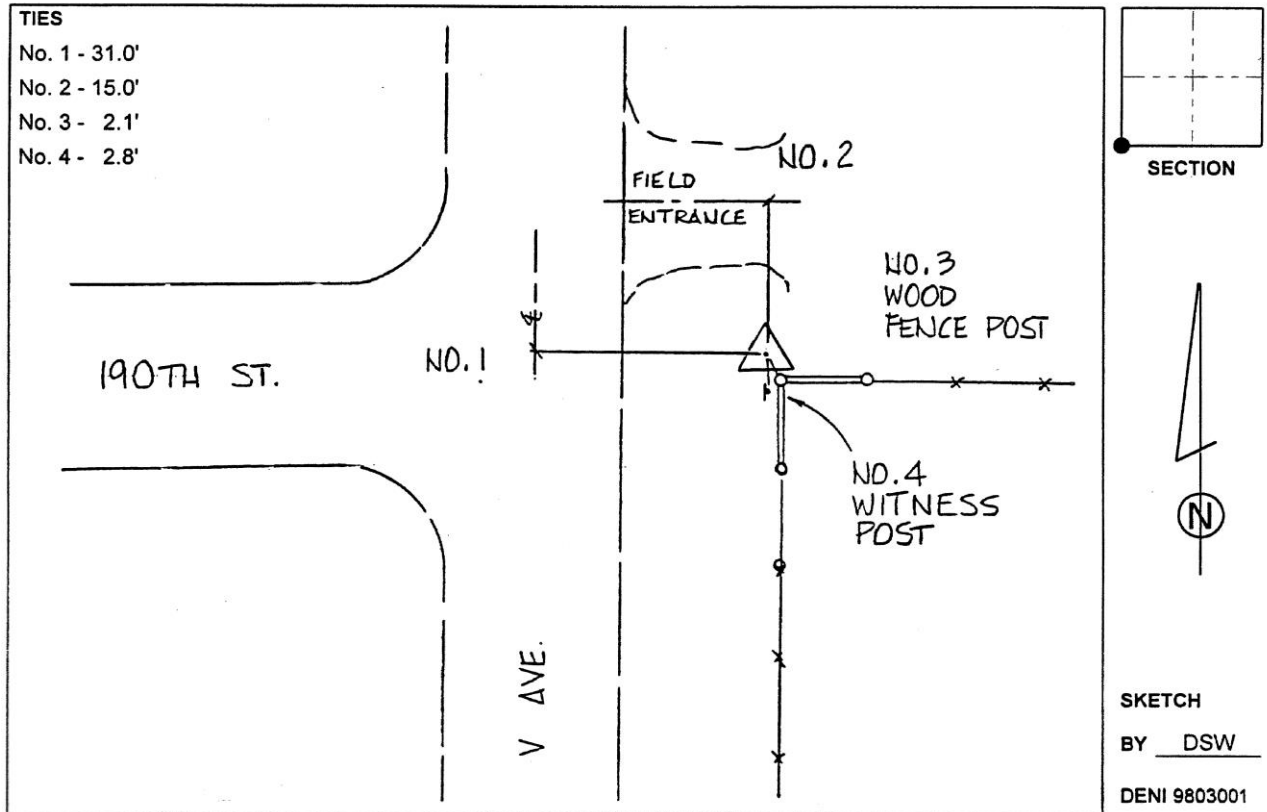
Designation: 881916 3 (Set by Deni Associates in 1998)

NAD 83(NA2011) Latitude: **N42°25'35.05679"** Longitude: **W93°04'50.56623"**
 NAVD 88 Ortho Height: **1112.480sft** Ellip. Ht: **1009.564sft** **Geoid12B**

Iowa North Zone (1401) Northing: **3618716.237sft** Easting: **5034450.747sft**
 Mapping Angle: **0°17'03"** Combination Scale Factor: **0.9999059320**

IaRCS Zone 4 Northing: **8565921.436sft** Easting: **14973191.178sft**
 Mapping Angle: **1°11'05"** Combination Scale Factor: **0.9999984741**

Monument Type: 3-1/4" aluminum disk set in the top of a 12" dia. poured-in-place concrete monument.



This document was prepared by Dan Corbin, Inc. on February 18th, 2019 for Hardin County, Iowa.