

Hardin County, Iowa
 Horizontal Datum: **NAD 83(NA2011)** - Vertical Datum: **NAVD 1988**
 Iowa State Plane North Zone (1401)
 Iowa Regional Coordinate System, Zone 4, Sioux City-Iowa Falls LCC
 US Survey Feet
9/30/18

Point Name: **8071**

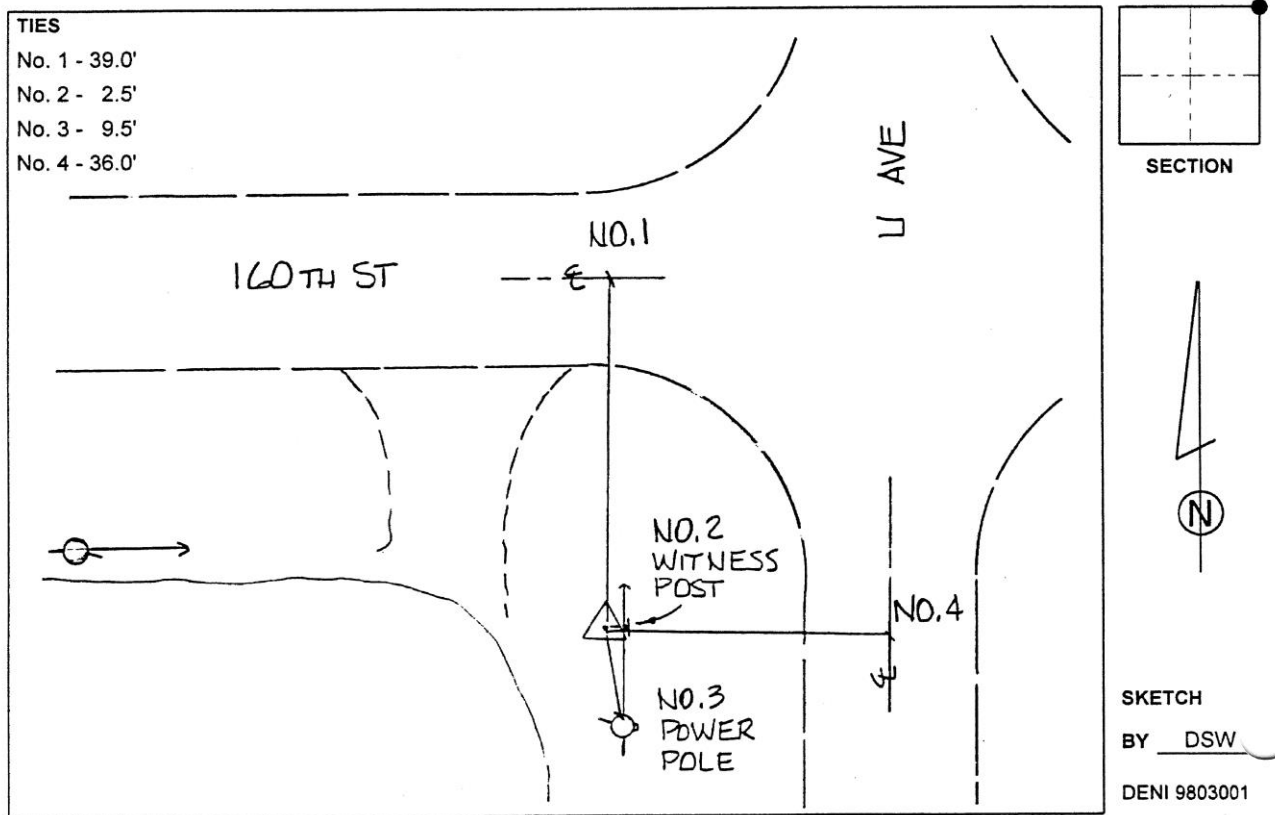
Designation: 881905 1 (Set by Deni Associates in 1998)

NAD 83(NA2011) Latitude: **N42°28'15.36334"** Longitude: **W93°05'08.68033"**
 NAVD 88 Ortho Height: **1152.680sft** Ellip. Ht: **1050.041sft** Geoid**12B**

Iowa North Zone (1401) Northing: **3634937.012sft** Easting: **5033012.764sft**
 Mapping Angle: **0°16'51"** Combination Scale Factor: **0.9999010437**

IaRCS Zone 4 Northing: **8582119.118sft** Easting: **14971498.248sft**
 Mapping Angle: **1°10'53"** Combination Scale Factor: **0.9999953961**

Monument Type: 3-1/4" aluminum disk set in the top of a 12" dia. poured-in-place concrete monument.



This document was prepared by Dan Corbin, Inc. on February 18th, 2019 for Hardin County, Iowa.