

Hardin County, Iowa
 Horizontal Datum: **NAD 83(NA2011)** - Vertical Datum: **NAVD 1988**
 Iowa State Plane North Zone (1401)
 Iowa Regional Coordinate System, Zone 4, Sioux City-Iowa Falls LCC
 US Survey Feet
9/30/18

Point Name: **8073**

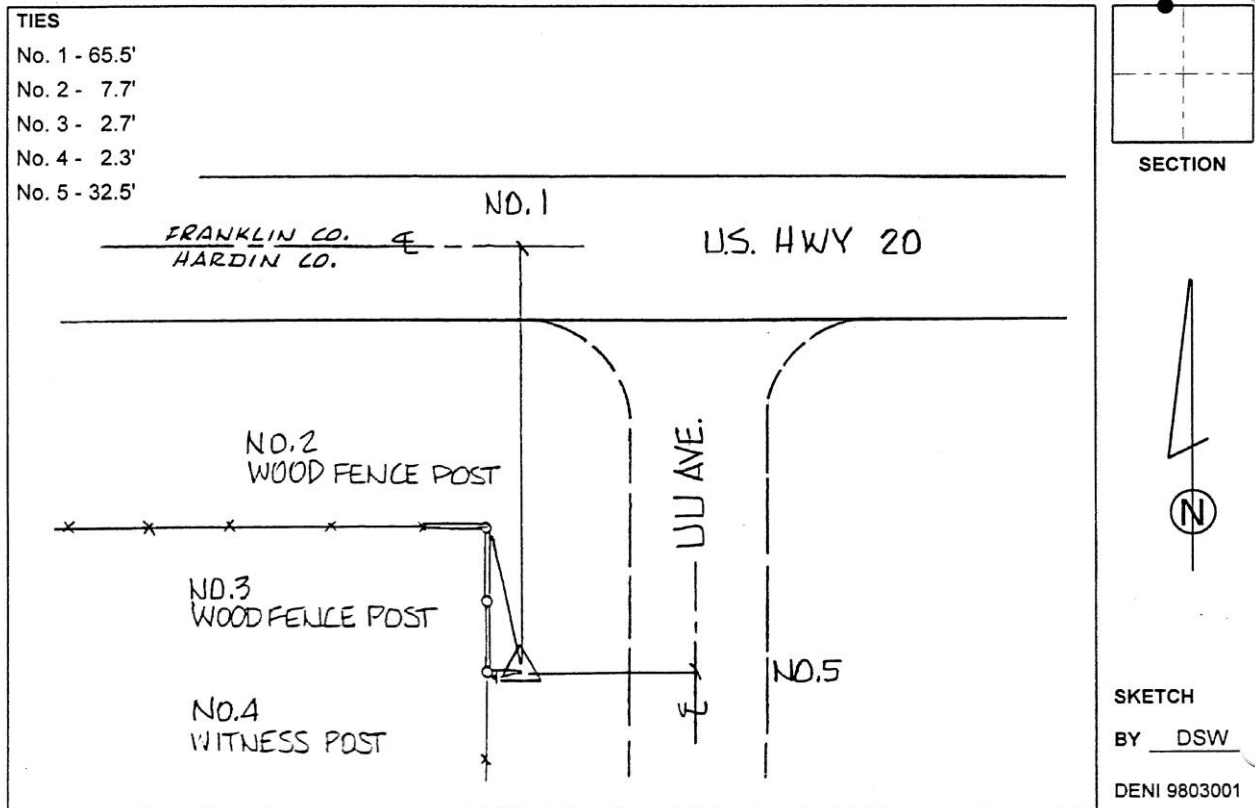
Designation: 891903 4 (Set by Deni Associates in 1998)

NAD 83(NA2011) Latitude: **N42°33'23.45799"** Longitude: **W93°04'33.82863"**
 NAVD 88 Ortho Height: **1121.920sft** Ellip. Ht: **1019.724sft** **Geoid12B**

Iowa North Zone (1401) Northing: **3666137.914sft** Easting: **5035468.206sft**
 Mapping Angle: **0°17'14"** Combination Scale Factor: **0.9998985006**

IaRCS Zone 4 Northing: **8613357.763sft** Easting: **14973463.147sft**
 Mapping Angle: **1°11'17"** Combination Scale Factor: **0.9999963366**

Monument Type: 3-1/4" aluminum disk set in the top of a 12" dia. poured-in-place concrete monument.



This document was prepared by Dan Corbin, Inc. on February 18th, 2019 for Hardin County, Iowa.