

Hardin County, Iowa
 Horizontal Datum: **NAD 83(NA2011)** - Vertical Datum: **NAVD 1988**
 Iowa State Plane North Zone (1401)
 Iowa Regional Coordinate System, Zone 4, Sioux City-Iowa Falls LCC
 US Survey Feet
9/30/18

Point Name: **8075**

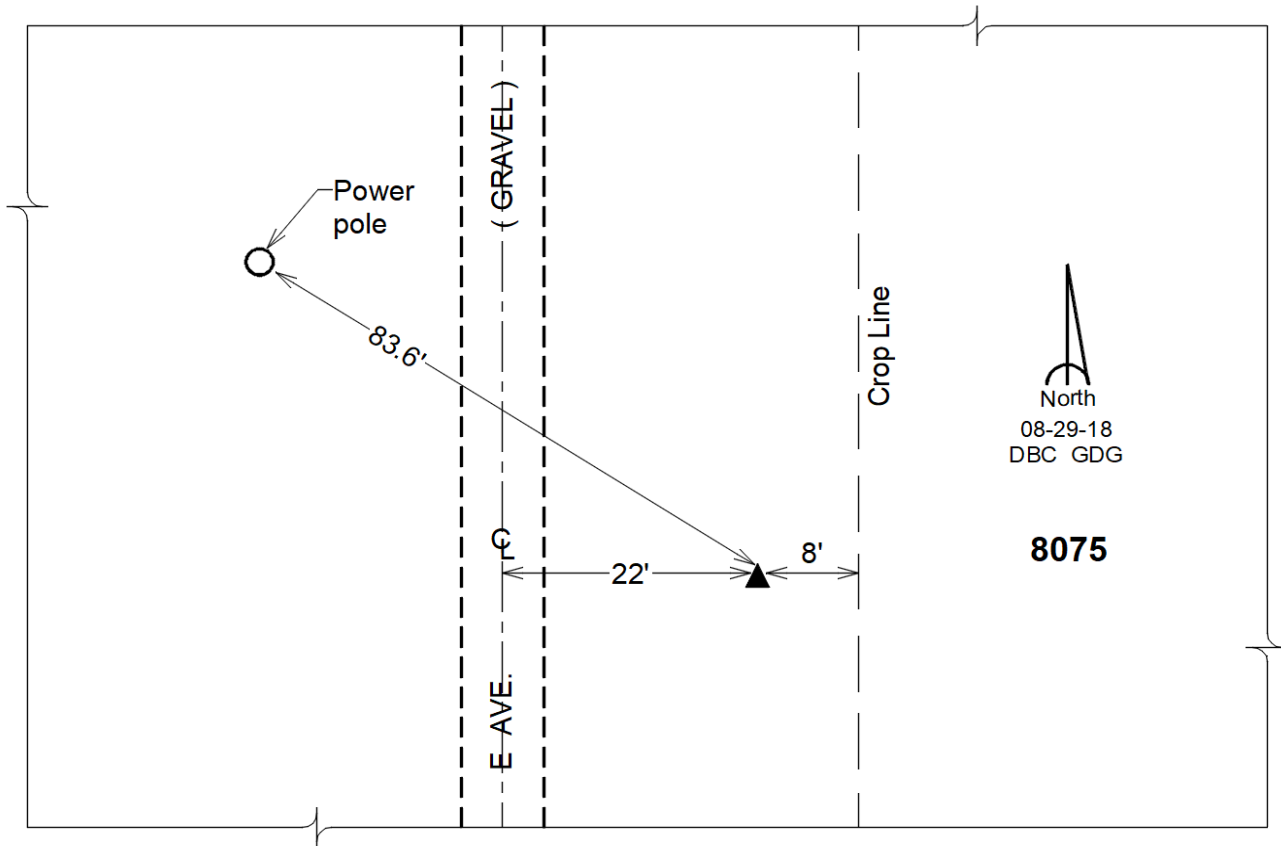
Designation: Hardin County 8075 (Set by DCI in 2018)

NAD 83(NA2011) Latitude: **N42°23'04.58734"** Longitude: **W93°24'18.74836"**
 NAVD 88 Ortho Height: **1143.408sft** Ellip. Ht: **1048.527sft** **Geoid12B**

Iowa North Zone (1401) Northing: **3603218.074sft** Easting: **4946859.517sft**
 Mapping Angle: **0°03'51"** Combination Scale Factor: **0.9999073876**

IaRCS Zone 4 Northing: **8549046.420sft** Easting: **14885846.449sft**
 Mapping Angle: **0°57'56"** Combination Scale Factor: **0.9999982313**

Monument Type: Berntsen "Top Security" aluminum rod monument with a 2-1/2" dia. survey cap and permanent magnet encased in a white PVC pipe with a NGS style aluminum access cover.



This document was prepared by Dan Corbin, Inc. on February 18th, 2019 for Hardin County, Iowa.