

Hardin County, Iowa
 Horizontal Datum: **NAD 83(NA2011)** - Vertical Datum: **NAVD 1988**
 Iowa State Plane North Zone (1401)
 Iowa Regional Coordinate System, Zone 4, Sioux City-Iowa Falls LCC
 US Survey Feet
9/30/18

Point Name: **8076**

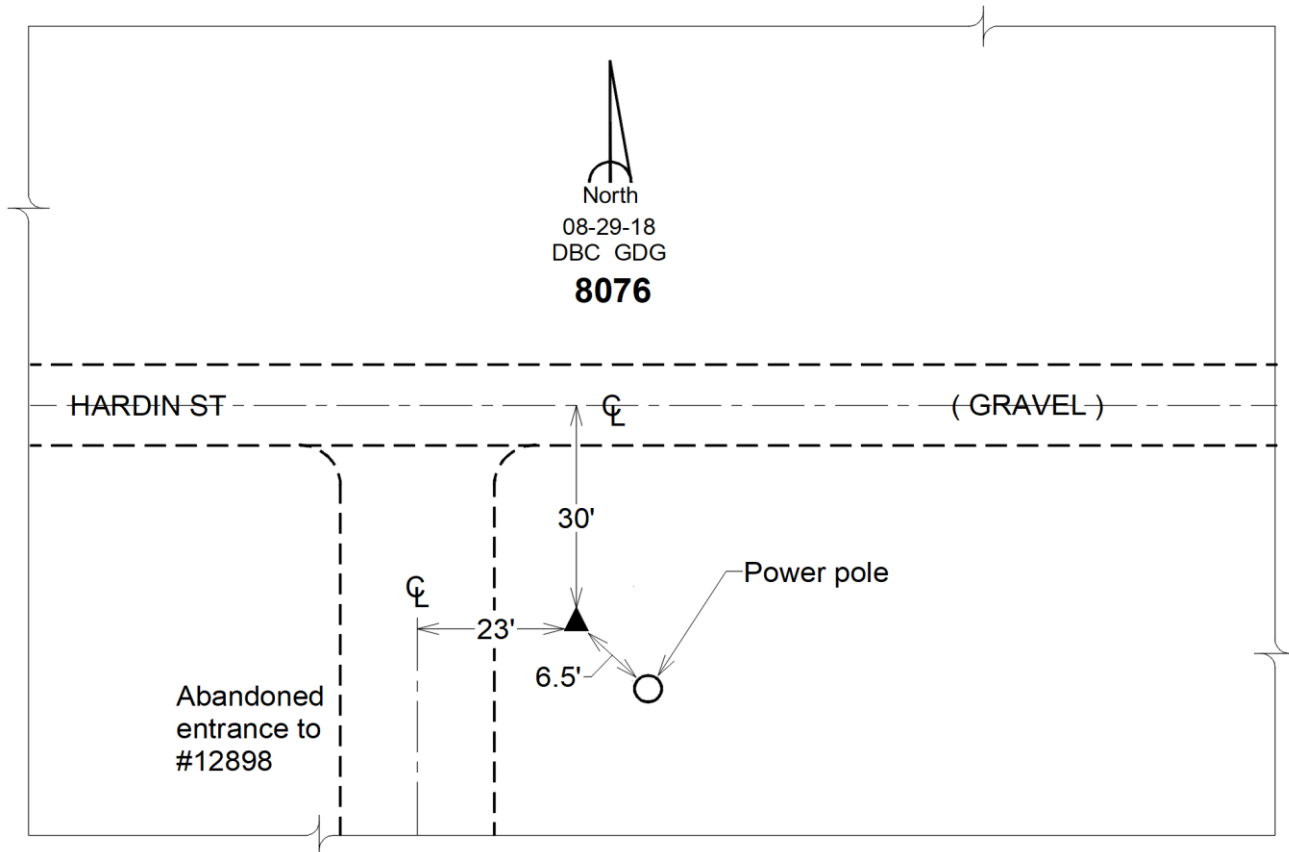
Designation: Hardin County 8076 (Set by DCI in 2018)

NAD 83(NA2011) Latitude: **N42°33'26.87147"** Longitude: **W93°26'30.43947"**
 NAVD 88 Ortho Height: **1152.832sft** Ellip. Ht: **1061.166sft** **Geoid12B**

Iowa North Zone (1401) Northing: **3666202.477sft** Easting: **4936933.273sft**
 Mapping Angle: **0°02'22"** Combination Scale Factor: **0.9998964881**

IaRCS Zone 4 Northing: **8611872.832sft** Easting: **14874929.738sft**
 Mapping Angle: **0°56'27"** Combination Scale Factor: **0.9999943625**

Monument Type: Berntsen "Top Security" aluminum rod monument with a 2-1/2" dia. survey cap and permanent magnet encased in a white PVC pipe with a NGS style aluminum access cover.



This document was prepared by Dan Corbin, Inc. on February 18th, 2019 for Hardin County, Iowa.