

Hardin County, Iowa
 Horizontal Datum: **NAD 83(NA2011)** - Vertical Datum: **NAVD 1988**
 Iowa State Plane North Zone (1401)
 Iowa Regional Coordinate System, Zone 4, Sioux City-Iowa Falls LCC
 US Survey Feet
9/30/18

Point Name: **8077**

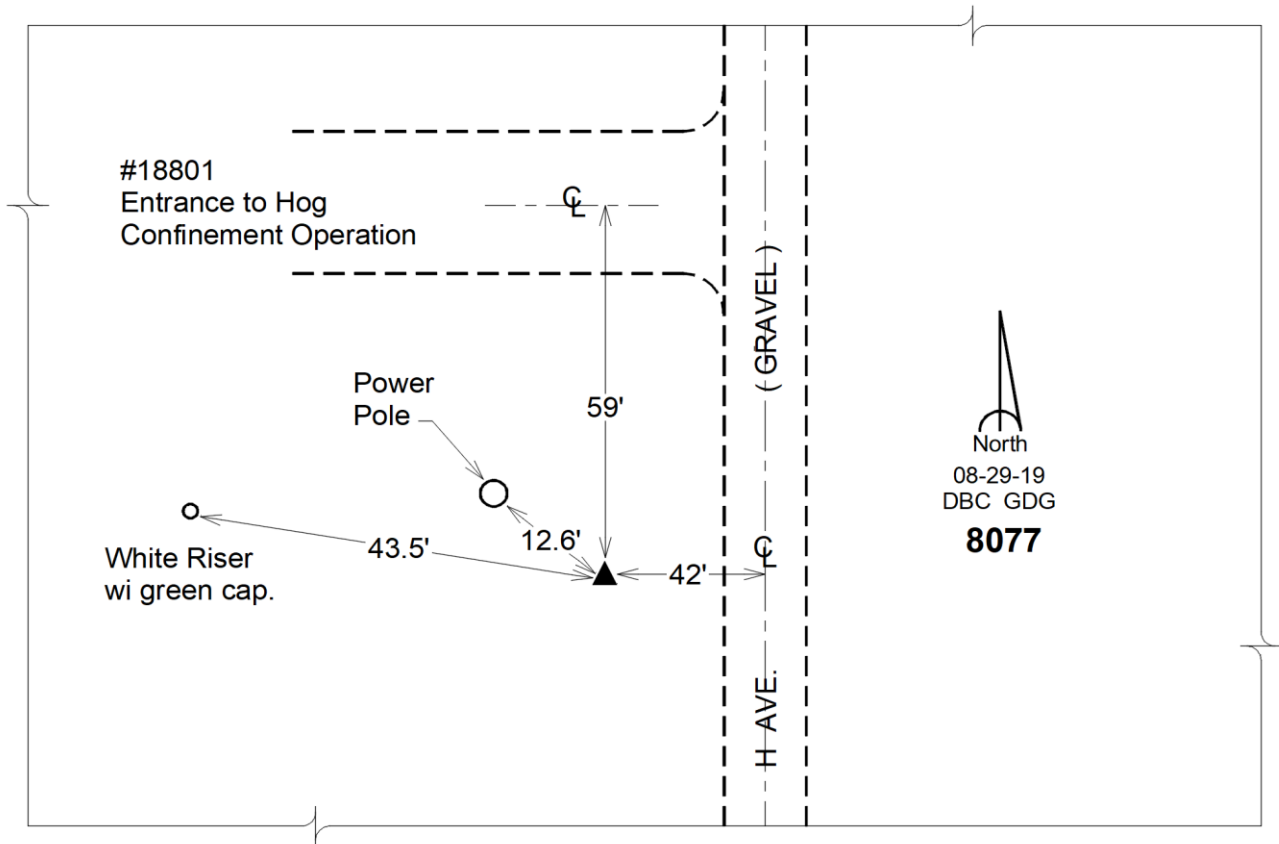
Designation: Hardin County 8077 (Set by DCI in 2018)

NAD 83(NA2011) Latitude: **N42°25'44.97006"** Longitude: **W93°20'48.66223"**
 NAVD 88 Ortho Height: **1135.835sft** Ellip. Ht: **1039.650sft** **Geoid12B**

Iowa North Zone (1401) Northing: **3619476.475sft** Easting: **4962596.183sft**
 Mapping Angle: **0°06'14"** Combination Scale Factor: **0.9999042940**

IaRCS Zone 4 Northing: **8565551.819sft** Easting: **14901326.888sft**
 Mapping Angle: **1°00'18"** Combination Scale Factor: **0.9999969478**

Monument Type: Berntsen "Top Security" aluminum rod monument with a 2-1/2" dia. survey cap and permanent magnet encased in a white PVC pipe with a NGS style aluminum access cover.



This document was prepared by Dan Corbin, Inc. on February 18th, 2019 for Hardin County, Iowa.