

**Hardin County, Iowa**  
 Horizontal Datum: **NAD 83(NA2011)** - Vertical Datum: **NAVD 1988**  
 Iowa State Plane North Zone (1401)  
 Iowa Regional Coordinate System, Zone 4, Sioux City-Iowa Falls LCC  
 US Survey Feet  
**9/30/18**

Point Name: **8078**

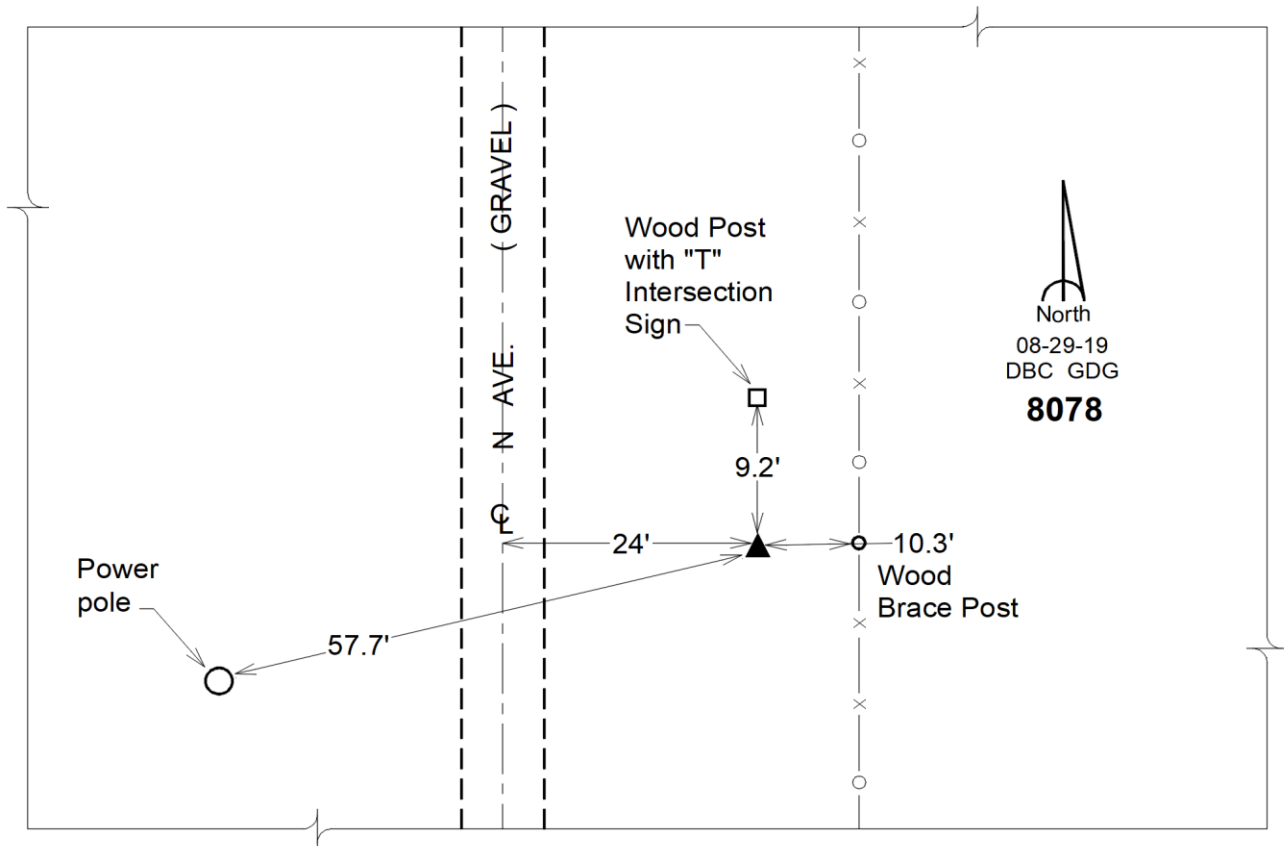
**Designation:** Hardin County 8078 (Set by DCI in 2018)

NAD 83(NA2011) Latitude: **N42°22'53.17701"** Longitude: **W93°13'54.65461"**  
 NAVD 88 Ortho Height: **1128.073sft** Ellip. Ht: **1028.170sft** **Geoid12B**

**Iowa North Zone (1401)** Northing: **3602163.569sft** Easting: **4993698.718sft**  
 Mapping Angle: **0°10'54"** Combination Scale Factor: **0.9999086337**

**IaRCS Zone 4** Northing: **8548728.589sft** Easting: **14932700.693sft**  
 Mapping Angle: **1°04'57"** Combination Scale Factor: **0.9999993487**

**Monument Type:** Berntsen "Top Security" aluminum rod monument with a 2-1/2" dia. survey cap and permanent magnet encased in a white PVC pipe with a NGS style aluminum access cover.



*This document was prepared by Dan Corbin, Inc. on February 18<sup>th</sup>, 2019 for Hardin County, Iowa.*