

Hardin County, Iowa
Horizontal Datum: **NAD 83(NA2011)** - Vertical Datum: **NAVD 1988**
Iowa State Plane North Zone (1401)
Iowa Regional Coordinate System, Zone 4, Sioux City-Iowa Falls LCC
US Survey Feet
9/30/18

Point Name: **8080**

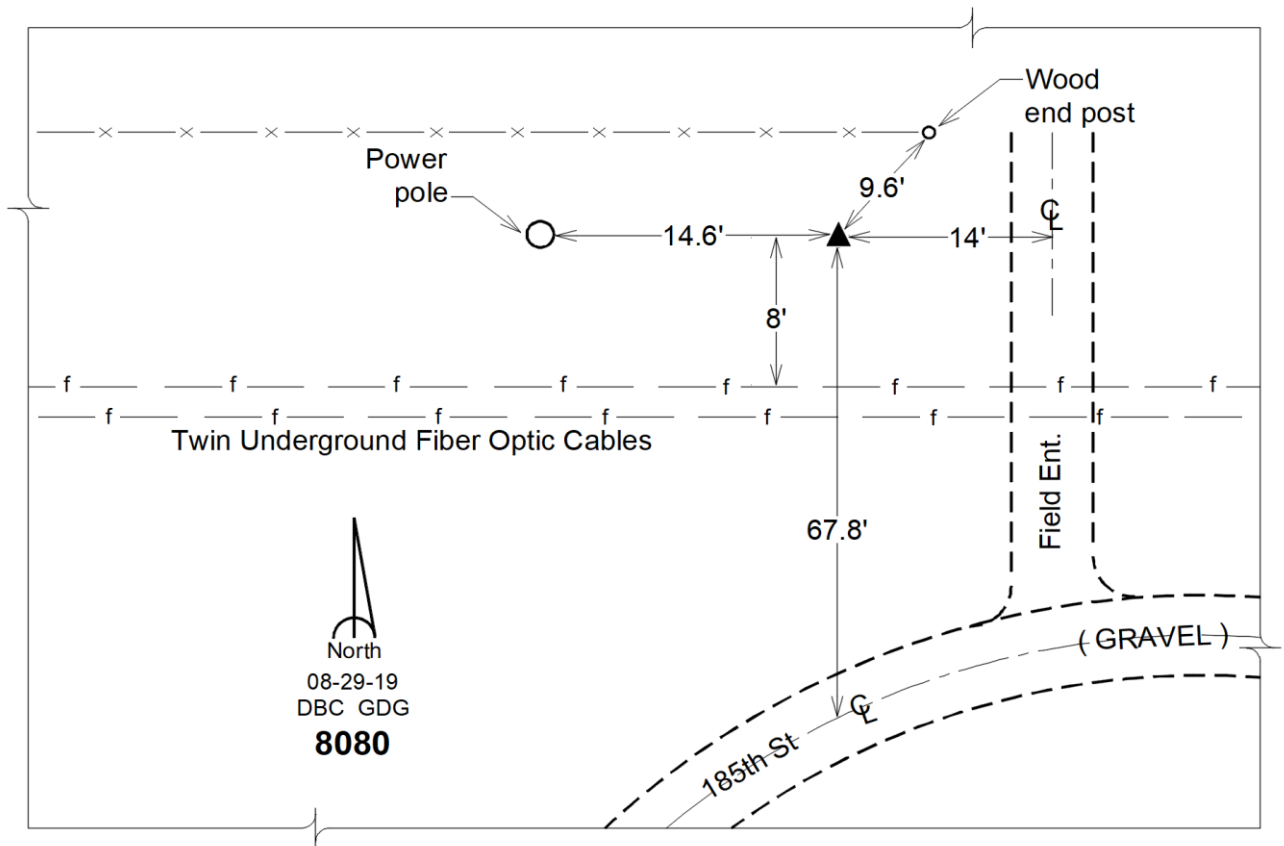
Designation: Hardin County 8080 (Set by DCI in 2018)

NAD 83(NA2011) Latitude: **N42°26'01.64278"** Longitude: **W93°08'37.42080"**
NAVD 88 Ortho Height: **1117.722sft** Ellip. Ht: **1015.993sft** **Geoid12B**

Iowa North Zone (1401) Northing: **3621329.442sft** Easting: **5017426.442sft**
Mapping Angle: **0°14'29"** Combination Scale Factor: **0.9999050934**

IaRCS Zone 4 Northing: **8568266.925sft** Easting: **14956126.317sft**
Mapping Angle: **1°08'32"** Combination Scale Factor: **0.9999979356**

Monument Type: Berntsen "Top Security" aluminum rod monument with a 2-1/2" dia. survey cap and permanent magnet encased in a white PVC pipe with a NGS style aluminum access cover.



This document was prepared by Dan Corbin, Inc. on February 18th, 2019 for Hardin County, Iowa.