

Hardin County, Iowa
 Horizontal Datum: **NAD 83(NA2011)** - Vertical Datum: **NAVD 1988**
 Iowa State Plane North Zone (1401)
 Iowa Regional Coordinate System, Zone 4, Sioux City-Iowa Falls LCC
 US Survey Feet
9/30/18

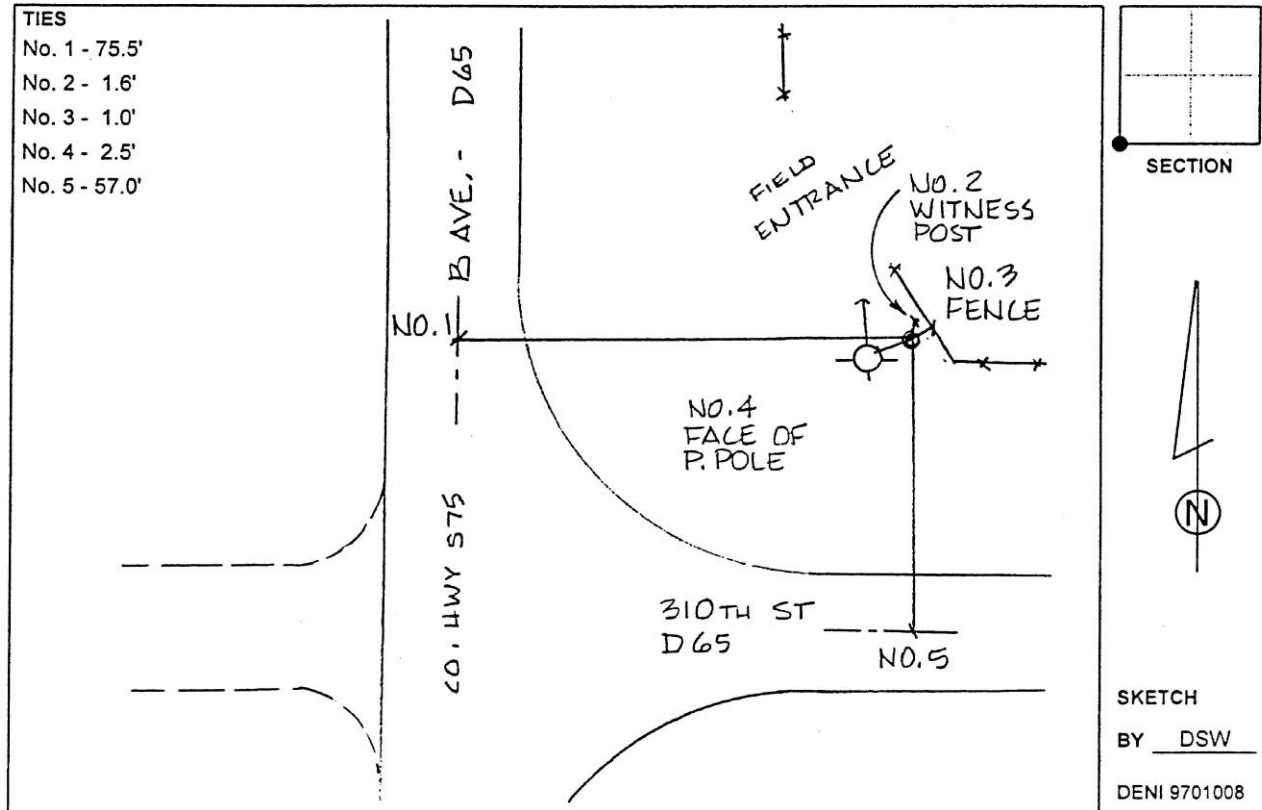
Point Name: **9709**
 Designation: USGS: 16 LAP

NAD 83(NA2011) Latitude: **N42°15'10.16990"** Longitude: **W93°00'05.71892"**
 NAVD 88 Ortho Height: **1032.540sft** Ellip. Ht: **928.740sft** Geoid12B

Iowa North Zone (1401) Northing: **3555577.243sft** Easting: **5056185.720sft**
 Mapping Angle: **0°20'16"** Combination Scale Factor: **0.9999270277**

IaRCS Zone 4 Northing: **8503126.265sft** Easting: **14995917.858sft**
 Mapping Angle: **1°14'18"** Combination Scale Factor: **1.0000125252**

Monument Type: Standard USGS disk on copper rod in concrete pipe sleeve, Sleeve projects 3" above ground.



This document was prepared by Dan Corbin, Inc. on February 18th, 2019 for Hardin County, Iowa.