

**Hardin County, Iowa**  
 Horizontal Datum: **NAD 83(NA2011)** - Vertical Datum: **NAVD 1988**  
 Iowa State Plane North Zone (1401)  
 Iowa Regional Coordinate System, Zone 4, Sioux City-Iowa Falls LCC  
 US Survey Feet  
**9/30/18**

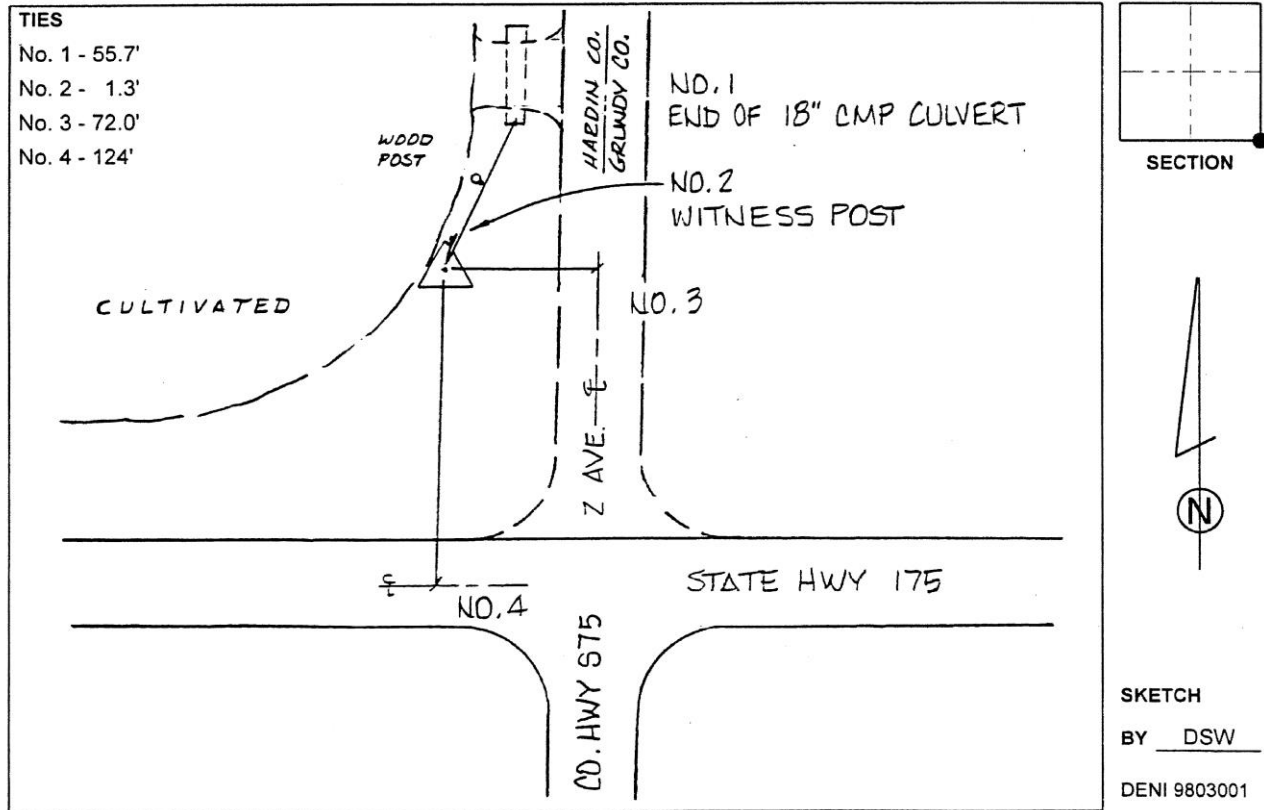
Point Name: **9797**  
 Designation: USGS: 13 LAP

NAD 83(NA2011) Latitude: **N42°21'14.89264"** Longitude: **W93°00'09.21524"**  
 NAVD 88 Ortho Height: **1083.940sft** Ellip. Ht: **980.028sft** Geoid12B

**Iowa North Zone (1401)** Northing: **3592495.100sft** Easting: **5055705.547sft**  
 Mapping Angle: **0°20'14"** Combination Scale Factor: **0.9999134130**

**IaRCS Zone 4** Northing: **8540035.247sft** Easting: **14994857.449sft**  
 Mapping Angle: **1°14'15"** Combination Scale Factor: **1.0000030197**

**Monument Type:** Standard USGS disk on rod in 6" diameter concrete tile, flush, stamped "13 LAP 1974".



*This document was prepared by Dan Corbin, Inc. on February 18<sup>th</sup>, 2019 for Hardin County, Iowa.*