

**Hardin County, Iowa**  
 Horizontal Datum: **NAD 83(NA2011)** - Vertical Datum: **NAVD 1988**  
 Iowa State Plane North Zone (1401)  
 Iowa Regional Coordinate System, Zone 4, Sioux City-Iowa Falls LCC  
 US Survey Feet  
**9/30/18**

Point Name: **9804**

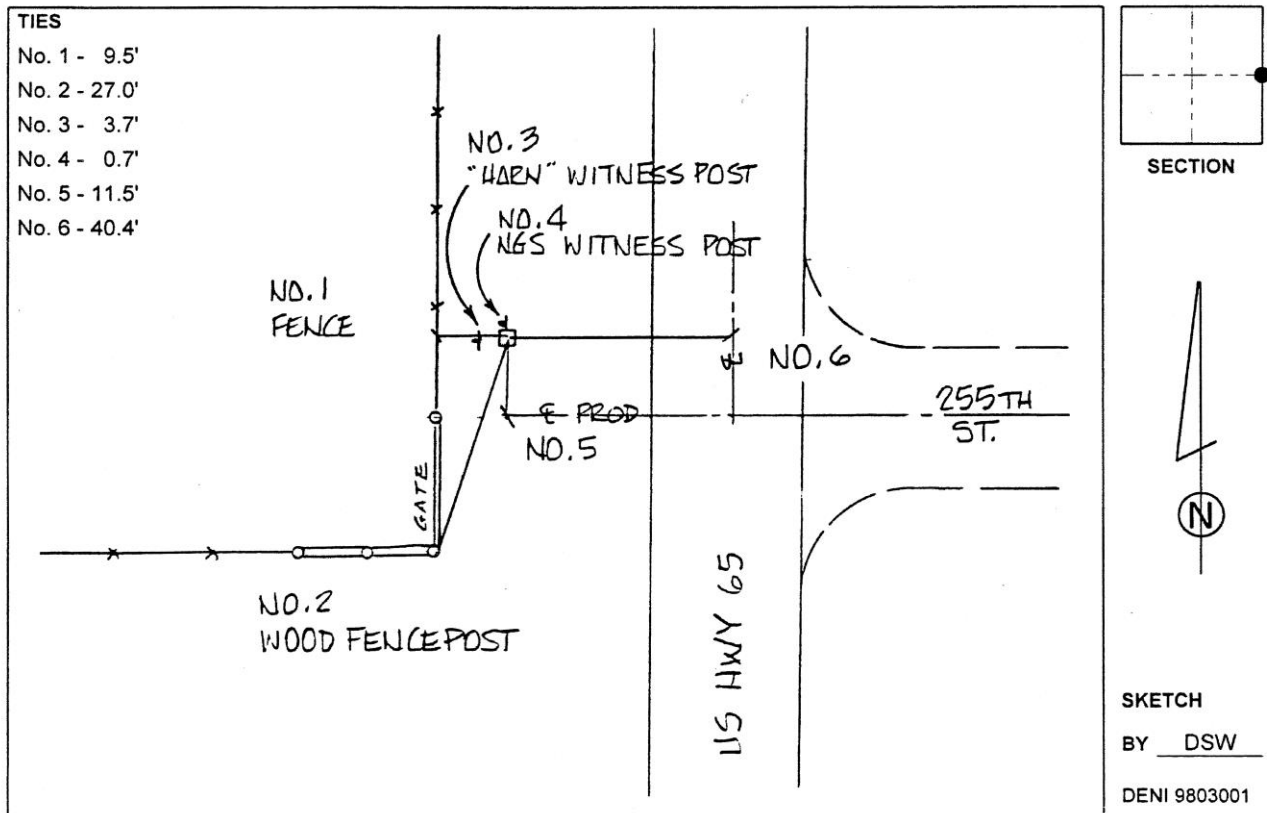
**Designation:** CBN: 1st order Vert. "42 105" PID: NK0300

NAD 83(NA2011) Latitude: **N42°19'55.66104"** Longitude: **W93°18'35.33267"**  
 NAVD 88 Ortho Height: **1112.320sft** Ellip. Ht: **1014.143sft** **Geoid12B**

**Iowa North Zone (1401)** Northing: **3584136.910sft** Easting: **4972674.430sft**  
 Mapping Angle: **0°07'44"** Combination Scale Factor: **0.9999139441**

**IaRCS Zone 4** Northing: **8530371.923sft** Easting: **14911960.598sft**  
 Mapping Angle: **1°01'48"** Combination Scale Factor: **1.0000026574**

**Monument Type:** A state survey standard disk, stamped 42-105 and set in the top of a concrete post.



*This document was prepared by Dan Corbin, Inc. on February 18<sup>th</sup>, 2019 for Hardin County, Iowa.*