

**Hardin County, Iowa**  
 Horizontal Datum: **NAD 83(NA2011)** - Vertical Datum: **NAVD 1988**  
 Iowa State Plane North Zone (1401)  
 Iowa Regional Coordinate System, Zone 4, Sioux City-Iowa Falls LCC  
 US Survey Feet  
**9/30/18**

Point Name: **9805**

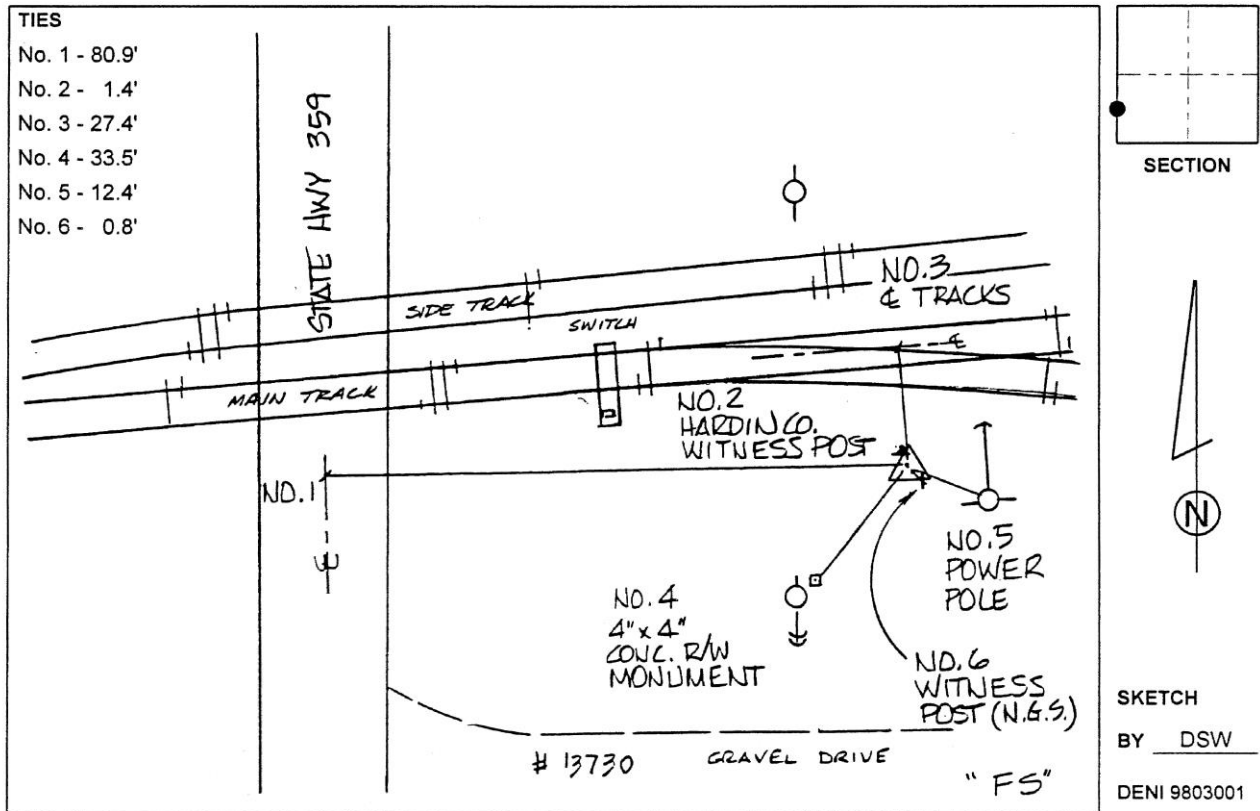
**Designation:** NGS: 2nd order Vert. "J 31" PID: NK0268

NAD 83(NA2011) Latitude: **N42°30'14.32360"** Longitude: **W93°22'50.37892"**  
 NAVD 88 Ortho Height: **1168.680sft** Ellip. Ht: **1074.493sft** Geoid12B

**Iowa North Zone (1401)** Northing: **3646728.173sft** Easting: **4953429.864sft**  
 Mapping Angle: **0°04'51"** Combination Scale Factor: **0.9998980708**

**IaRCS Zone 4** Northing: **8592658.542sft** Easting: **14891732.213sft**  
 Mapping Angle: **0°58'55"** Combination Scale Factor: **0.9999937675**

**Monument Type:** A standard disk stamped J-31 1934 set on top of a concrete post.



*This document was prepared by Dan Corbin, Inc. on February 18<sup>th</sup>, 2019 for Hardin County, Iowa.*