

Hardin County, Iowa
 Horizontal Datum: **NAD 83(NA2011)** - Vertical Datum: **NAVD 1988**
 Iowa State Plane North Zone (1401)
 Iowa Regional Coordinate System, Zone 4, Sioux City-Iowa Falls LCC
 US Survey Feet
9/30/18

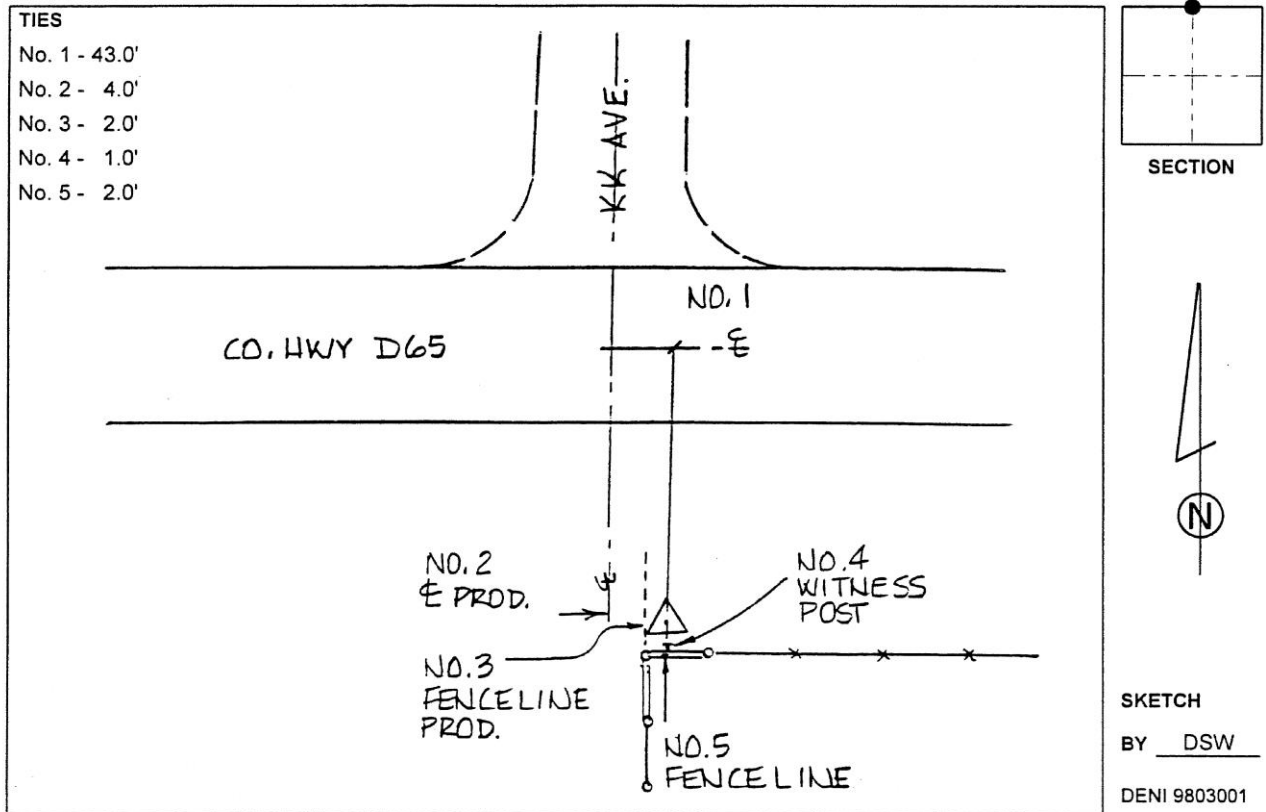
Point Name: **9807**
 Designation: USGS: 22 LAP

NAD 83(NA2011) Latitude: **N42°14'16.49087"** Longitude: **W93°16'49.83569"**
 NAVD 88 Ortho Height: **1059.610sft** Ellip. Ht: **959.952sft** Geoid12B

Iowa North Zone (1401) Northing: **3549822.847sft** Easting: **4980687.288sft**
 Mapping Angle: **0°08'56"** Combination Scale Factor: **0.9999274402**

IaRCS Zone 4 Northing: **8496185.137sft** Easting: **14920512.791sft**
 Mapping Angle: **1°02'59"** Combination Scale Factor: **1.0000123333**

Monument Type: Standard USGS disk on rod in 6" diameter concrete tile, stamped "22 LAP 1974".



This document was prepared by Dan Corbin, Inc. on February 18th, 2019 for Hardin County, Iowa.