

**Hardin County, Iowa**  
 Horizontal Datum: **NAD 83(NA2011)** - Vertical Datum: **NAVD 1988**  
 Iowa State Plane North Zone (1401)  
 Iowa Regional Coordinate System, Zone 4, Sioux City-Iowa Falls LCC  
 US Survey Feet  
**9/30/18**

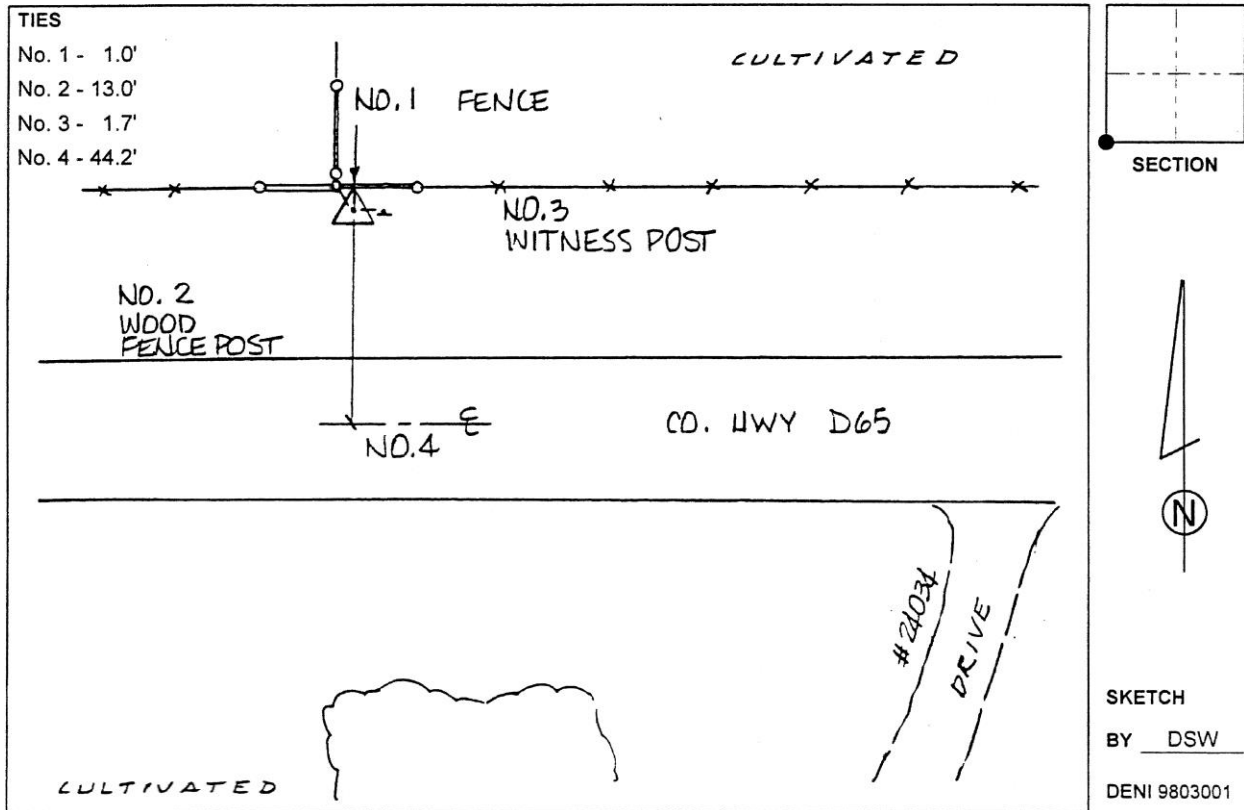
Point Name: **9808**  
 Designation: USGS: 21 LAP

NAD 83(NA2011) Latitude: **N42°14'17.16577"** Longitude: **W93°13'54.17085"**  
 NAVD 88 Ortho Height: **1136.590sft** Ellip. Ht: **1035.902sft** Geoid12B

**Iowa North Zone (1401)** Northing: **3549929.285sft** Easting: **4993900.791sft**  
 Mapping Angle: **0°10'55"** Combination Scale Factor: **0.9999237856**

**IaRCS Zone 4** Northing: **8496499.353sft** Easting: **14933724.109sft**  
 Mapping Angle: **1°04'58"** Combination Scale Factor: **1.0000086860**

**Monument Type:** Standard USGS disk on rod in 6" diameter concrete tile, stamped "21 LAP 1974".



*This document was prepared by Dan Corbin, Inc. on February 18<sup>th</sup>, 2019 for Hardin County, Iowa.*