

Hardin County, Iowa

Horizontal Datum: **NAD 83(NA2011)** - Vertical Datum: **NAVD 1988**

Iowa State Plane North Zone (1401)

Iowa Regional Coordinate System, Zone 4, Sioux City-Iowa Falls LCC

US Survey Feet

Point Name: **9814 (Destroyed)**

Designation: USGS 27 LAP

NAD 83(1996) Latitude: ~~N 42 15 09.39264~~

Longitude: ~~W 93 25 28.95722~~

NAVD 88 Ortho Height: ~~1207.57~~sft

Ellip. Ht: ~~1111.94~~sft

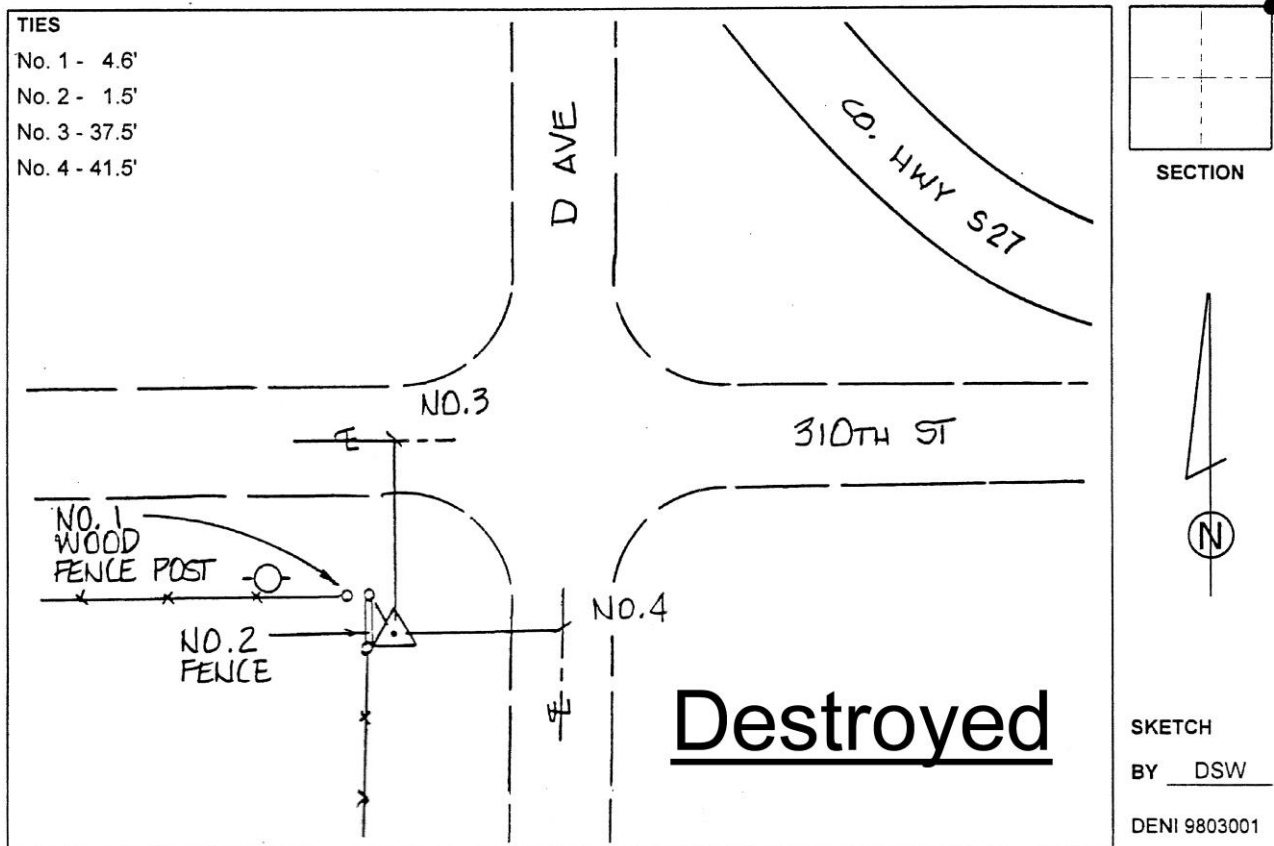
Iowa North Zone (1401) Northing: ~~3555109.87~~sft

Easting: ~~4941633.48~~sft

Mapping Angle: ~~0 03 03.70~~

Combination Scale Factor: ~~0.99997145~~

Monument Type: Standard USGS disk on rod in 6" diameter concrete tile well, stamped "27 CDL 1974"



This document was prepared by Dan Corbin, Inc. on February 18th, 2019 for Hardin County, Iowa.