

Hardin County, Iowa

Horizontal Datum: **NAD 83(NA2011)** - Vertical Datum: **NAVD 1988**

Iowa State Plane North Zone (1401)

Iowa Regional Coordinate System, Zone 4, Sioux City-Iowa Falls LCC

US Survey Feet

9/30/18

Point Name: **9837**

Designation: CBN: 1st order Vert. "42 141" PID: NK0285

NAD 83(NA2011) Latitude: **N42°28'14.50830"** Longitude: **W93°15'45.11354"**

NAVD 88 Ortho Height: **1134.520sft** Ellip. Ht: **1036.152sft** **Geoid12B**

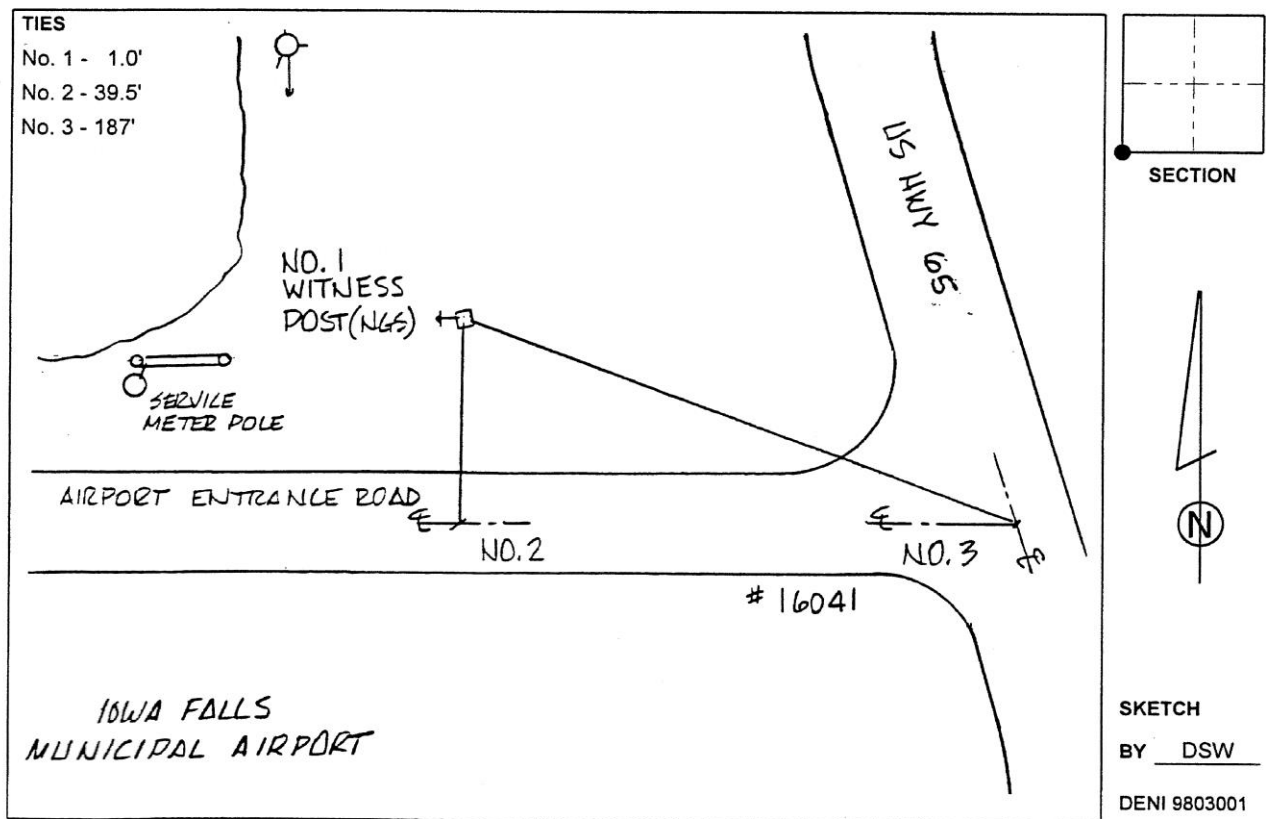
Iowa North Zone (1401) Northing: **3634666.610sft** Easting: **4985317.480sft**

Mapping Angle: **0°09'39"** Combination Scale Factor: **0.9999017217**

IaRCS Zone 4 Northing: **8581098.826sft** Easting: **14923808.610sft**

Mapping Angle: **1°03'43"** Combination Scale Factor: **0.9999960645**

Monument Type: A standard disk stamped "I.G.S. 42-141" and set in the top of a concrete post projecting 1.3ft above ground.



This document was prepared by Dan Corbin, Inc. on February 18th, 2019 for Hardin County, Iowa.