

2004
Henry County, Iowa
 Iowa South Zone (1402)
 Horizontal Datum: NAD_83(1996) & Vertical Datum: NAVD_88



Point Number: **24**

Northing: **305168.94 FT**

Northing: **93015.678 M**

Easting: **2181446.39 FT**

Easting: **664906.190 M**

Elev: **689.15 FT**

Elev: **210.053 M**

Latitude: **N 40-49-15.33628**

Longitude: **W 91- 32- 42.15664**

Ellip. Ht: **176.955 M**

Theta: **1 17 15.835**

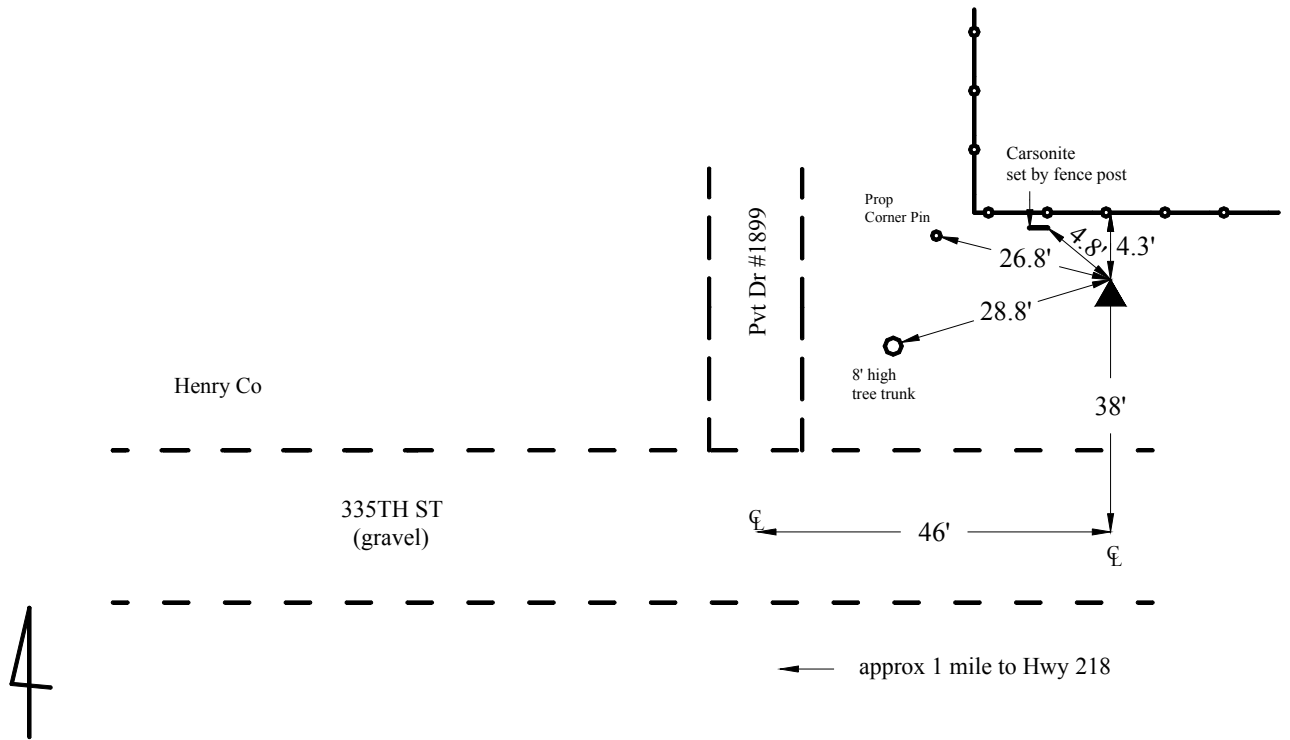
Combination Factor: **0.99994247**

03 Geoid Ht: **-33.098 M**

Designation: **LEE COUNTY GPS CONTROL 2001-024**

Location: **Near the E 1/4 Cor of Sec 33 T70N R6W.**

Monument Type: 5/8" dia driven aluminum rod with a 2-1/2" dia aluminum cap and permanent magnet encased in a 5" dia PVC pipe with an aluminum access cover.



4
2001-024
 BRS/RKE/SBS
 March 6, 2001

Set NGS style rod
 monument with
 access cover