

**2004**  
**Henry County, Iowa**  
 Iowa South Zone (1402)  
 Horizontal Datum: NAD\_83(1996) & Vertical Datum: NAVD\_88



Point Number: **34**

Northing: **302790.53 FT**

Northing: **92290.738 M**

Easting: **2196087.08 FT**

Easting: **669368.681 M**

Elev: **711.31 FT**

Elev: **216.808 M**

Latitude: **N 40-48-48.54582**

Longitude: **W 91- 29- 32.48780**

Ellip. Ht: **183.698 M**

Theta: **1 19 20.770**

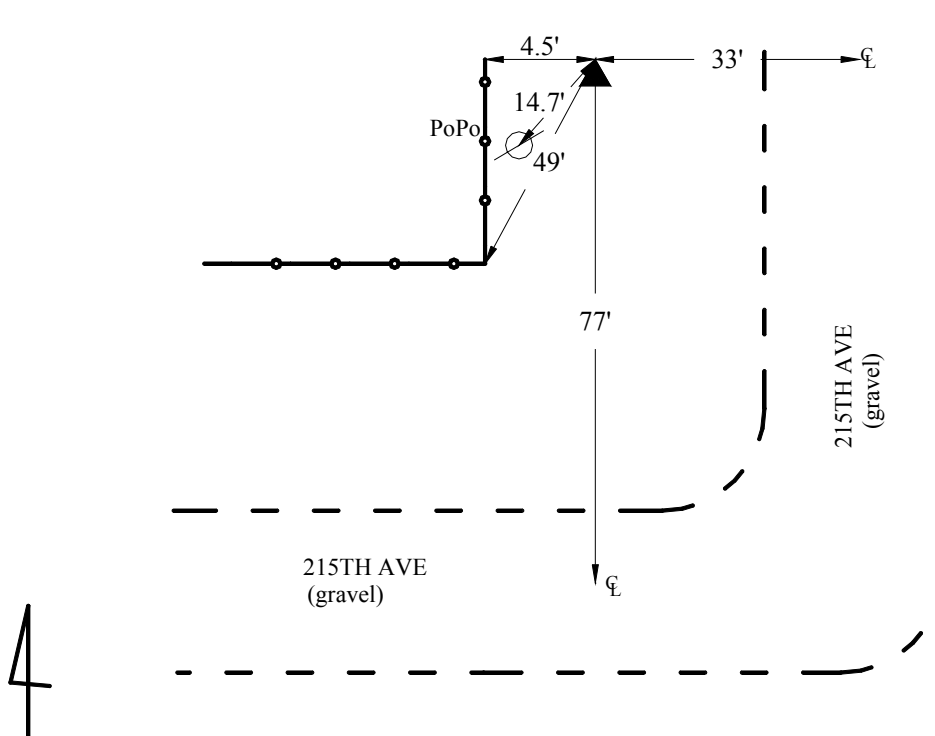
Combination Factor: **0.99994228**

03 Geoid Ht: **-33.110 M**

Designation: **LEE COUNTY GPS CONTROL 2001-034**

Location: **In the SE 1/4 of Sec 36 T70N R6W.**

Monument Type: 5/8" dia driven aluminum rod with a 2-1/2" dia aluminum cap and permanent magnet encased in a 5" dia PVC pipe with an aluminum access cover.



**2001-034**  
 BRS/RKE/SBS  
 March 7, 2001

Set NGS style rod monument with access cover