

2004

Henry County, Iowa
Iowa South Zone (1402)

Horizontal Datum: NAD_83(1996) & Vertical Datum: NAVD_88



Point Number: 208

Northing: 387879.35 FT

Northing: 118225.864 M

Easting: 2227664.46 FT

Easting: 678993.484 M

Elev: 740.26 FT

Elev: 225.632 M

Latitude: N 41-02-41.66397

Longitude: W 91- 22- 14.83941

Ellip. Ht: 192.652 M

Theta: 1 24 09.049

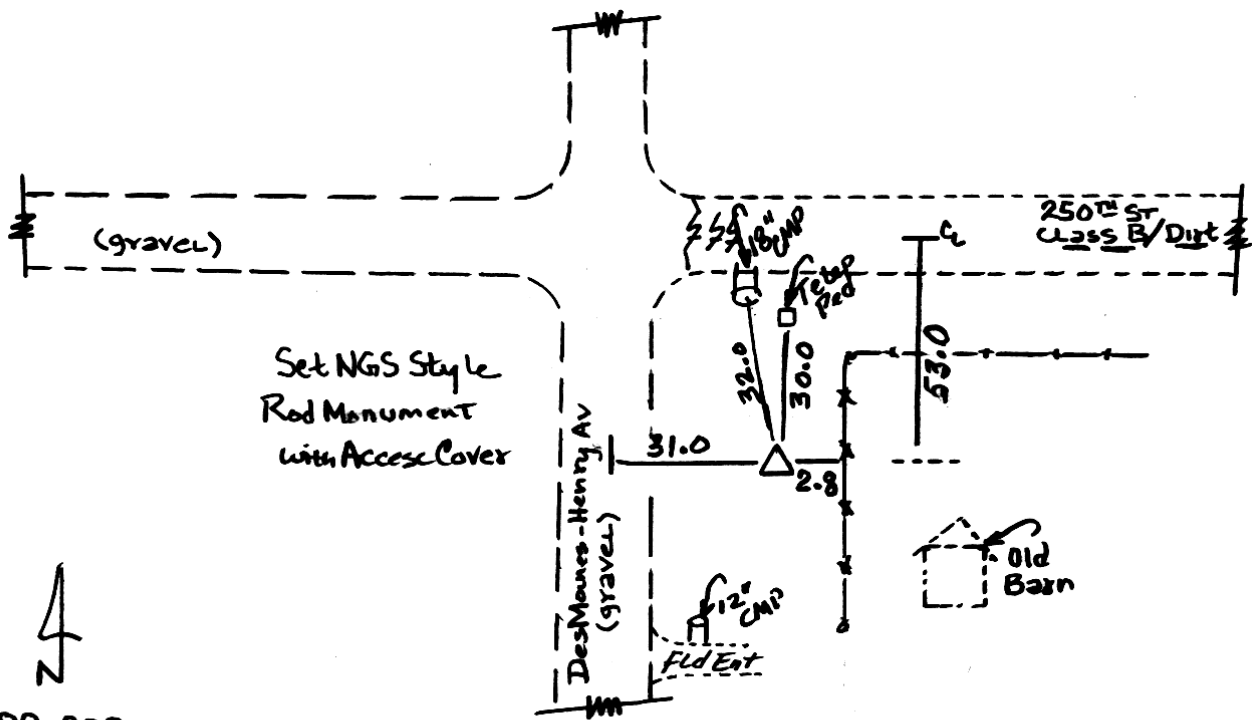
Combination Factor: 0.99992184

03 Geoid Ht: -32.980 M

Designation: DES MOINES COUNTY GPS CONTROL 1999-208

Location: Near the NW Cor of Sec 18 T72N R4W.

Monument Type: 5/8" dia driven aluminum rod with a 2-1/2" dia aluminum cap and permanent magnet encased in a 5" dia PVC pipe with an aluminum access cover.



99-208
APL 1999
BRS RKE