

Reprinted on 10-29-2008
Humboldt County, Iowa
Iowa North Zone (1401)
Horiz. Datum: NAD83(1996)
Vert. Datum: NAVD 1988
US Survey Feet
2006

Point Name: 1

Designation: 2006 -001 Humboldt County GPS Control Pt.

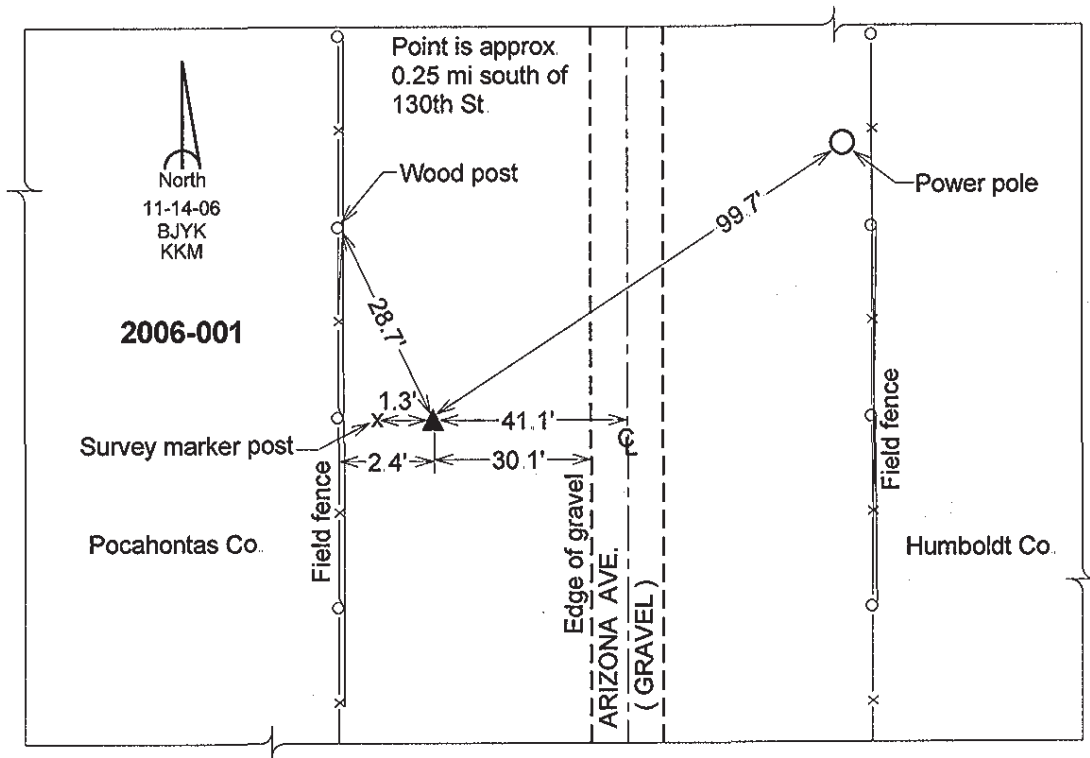
Northing: 3777697.28sft Easting: 4668428.13sft

Orthometric Height: 1137.11sft Ellipsoid Height: 1042.13sft Geoid03

Latitude: 42°51'34.36460"N Longitude: 94°26'34.69401"W

Mapping Angle: -0°38'21" Combination Scale Factor: 0.999901240

Monument Type: Berntsen Top Security Rod Monument with a 2-1/2" dia. domed survey cap and permanent magnet encased in a 5" dia. PVC pipe with a NGS style aluminum access cover.



This document was prepared by DCI and GBC for use by Humboldt County, Iowa.