

Reprinted on 10-29-2008
Humboldt County, Iowa
 Iowa North Zone (1401)
 Horiz. Datum: NAD83(1996)
 Vert. Datum: NAVD 1988
 US Survey Feet
 2006

Point Name: 10

Designation: 2006 -010 Humboldt County GPS Control Pt.

Northing: 3763599.04sft Easting: 4762901.63sft

Orthometric Height: 1140.94sft Ellipsoid Height: 1045.14sft **Geoid03**

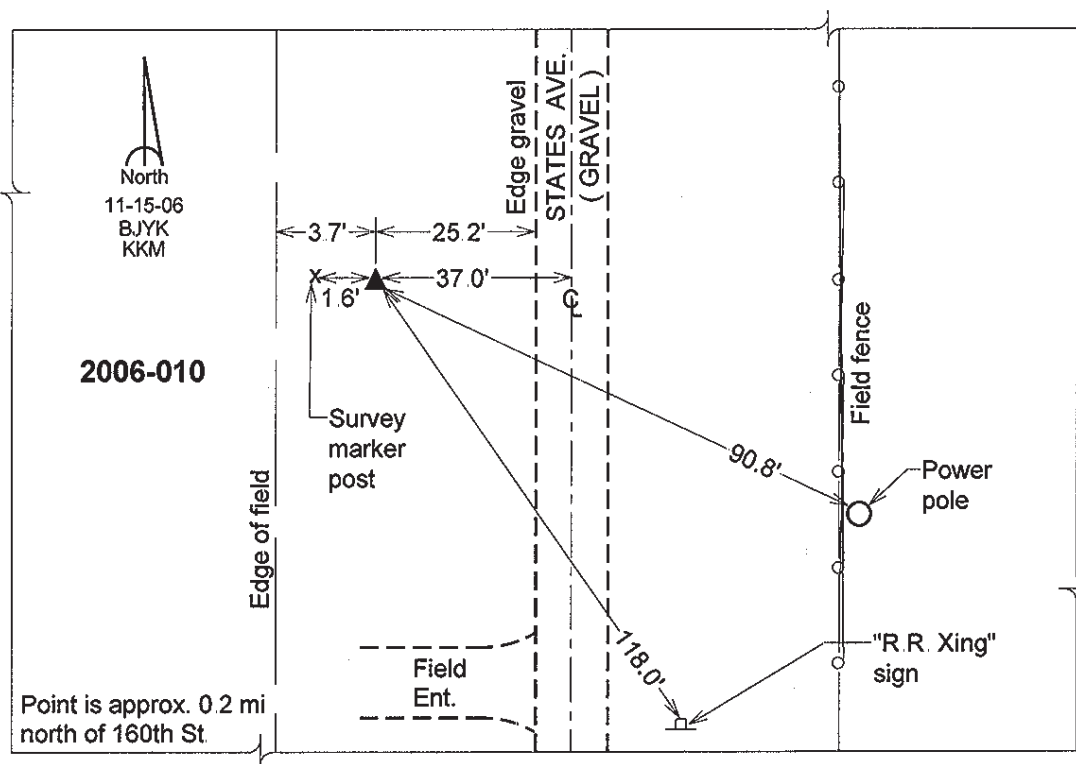
Latitude: 42°49'23.57073"N

Longitude: 94°05'24.90980"W

Mapping Angle: -0°24'00"

Combination Scale Factor: 0.999899180

Monument Type: Berntsen Top Security Rod Monument with a 2-1/2" dia. domed survey cap and permanent magnet encased in a 5" dia. PVC pipe with a NGS style aluminum access cover.



This document was prepared by DCI and GBC for use by Humboldt County, Iowa.