

Reprinted on 10-29-2008  
**Humboldt County, Iowa**  
Iowa North Zone (1401)  
Horiz. Datum: NAD83(1996)  
Vert Datum: NAVD 1988  
US Survey Feet  
2006

Point Name: **1005**

**Designation:** GPS Monument Number: 5, Wright Co. Iowa (set by V&K in 2004)

Northing: **3777852.01sft** Easting: **4794961.09sft**

Orthometric Height: **1116.21sft** Ellipsoid Height: **1020.67sft** **Geoid03**

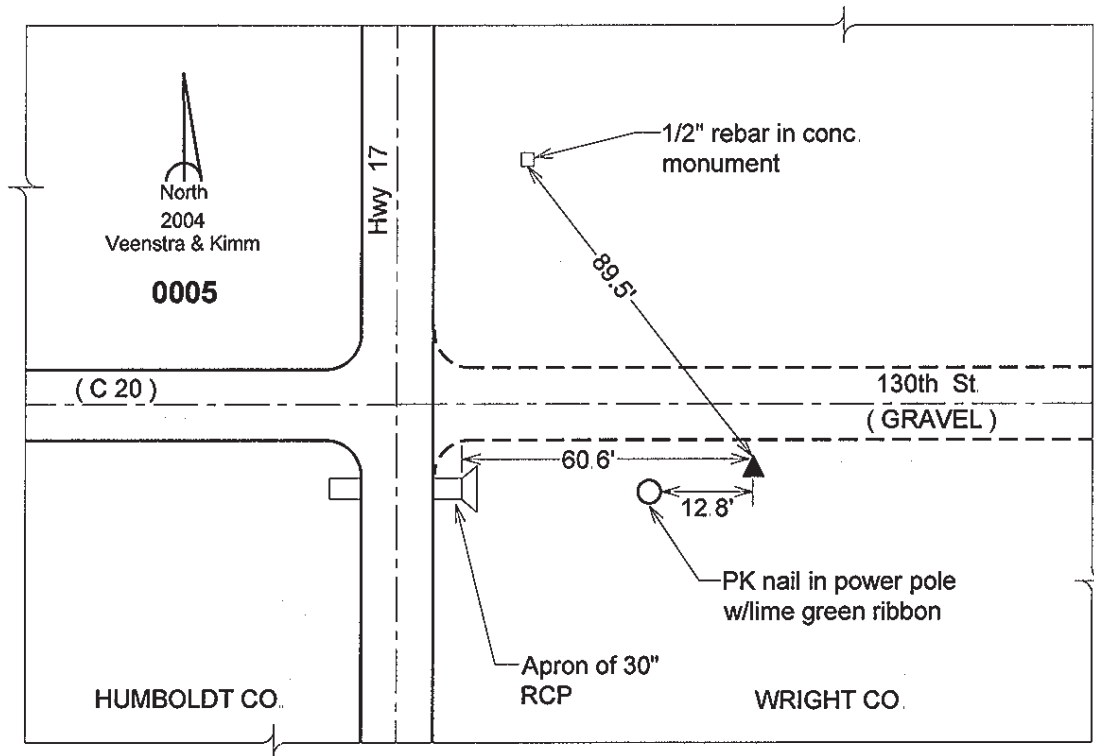
Latitude: **42°51'46.34576"N**

Longitude: **93°58'15.77291"W**

Mapping Angle: **-0°19'09"**

Combination Scale Factor: **0.999902460**

**Monument Type:** 5/8" dia. aluminum rod with 2-1/2" dia. aluminum cap & permanent magnet encased in a 5" dia. PVC pipe with aluminum access cover.



*This document was prepared by DCI and GBC for use by Humboldt County, Iowa.*