

Reprinted on 10-29-2008
Humboldt County, Iowa
Iowa North Zone (1401)
Horiz. Datum: NAD83(1996)
Vert. Datum: NAVD 1988
US Survey Feet
2006

Point Name: 1014

Designation: GPS Monument Number: 14, Wright Co. Iowa (set by V&K in 2004)

Northing: 3762144.29sft Easting: 4794865.58sft

Orthometric Height: 1128.27sft Ellipsoid Height: 1033.26sft Geoid03

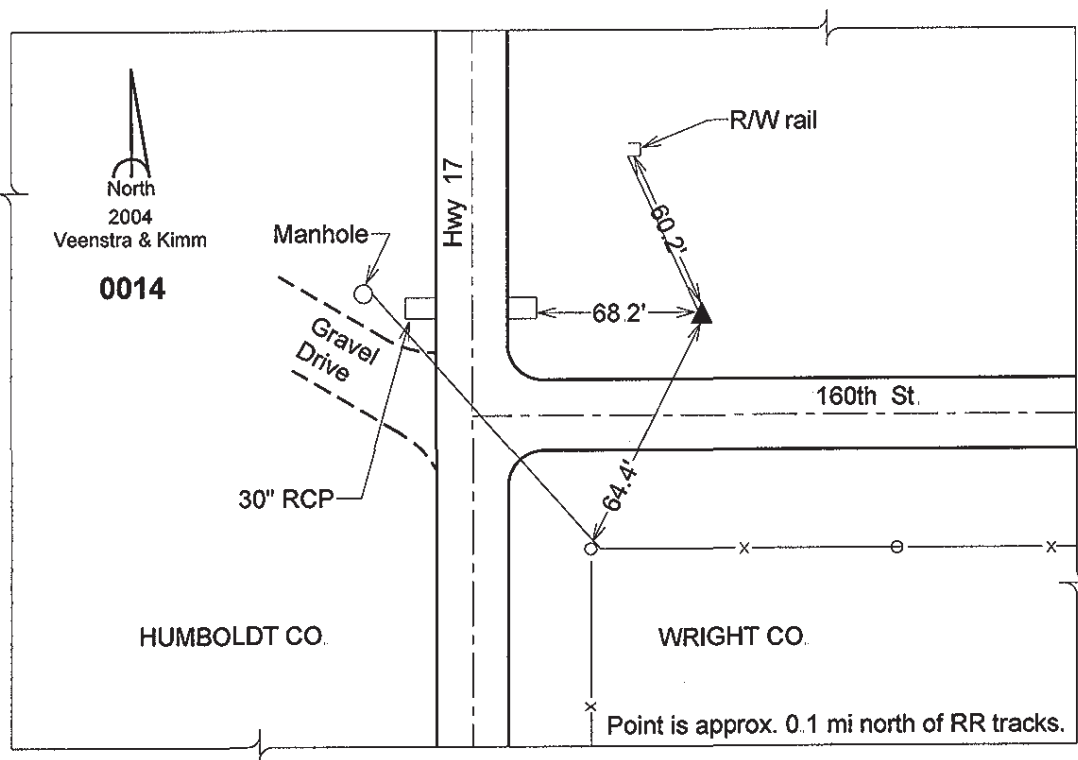
Latitude: 42°49'11.18293"N

Longitude: 93°58'15.88003"W

Mapping Angle: -0°19'09"

Combination Scale Factor: 0.999899590

Monument Type: 5/8" dia. aluminum rod with 2-1/2" dia. aluminum cap & permanent magnet encased in a 5" dia. PVC pipe with aluminum access cover.



This document was prepared by DCI and GBC for use by Humboldt County, Iowa.