

Reprinted on 10-29-2008
Humboldt County, Iowa
Iowa North Zone (1401)
Horiz Datum: NAD83(1996)
Vert. Datum: NAVD 1988
US Survey Feet
2006

Point Name: **1023**

Designation: GPS Monument Number: 23, Wright Co. Iowa (set by V&K in 2004)

Northing: **3745899.91sft** Easting: **4794709.80sft**

Orthometric Height: **1127.04sft** Ellipsoid Height: **1032.68sft** Geoid03

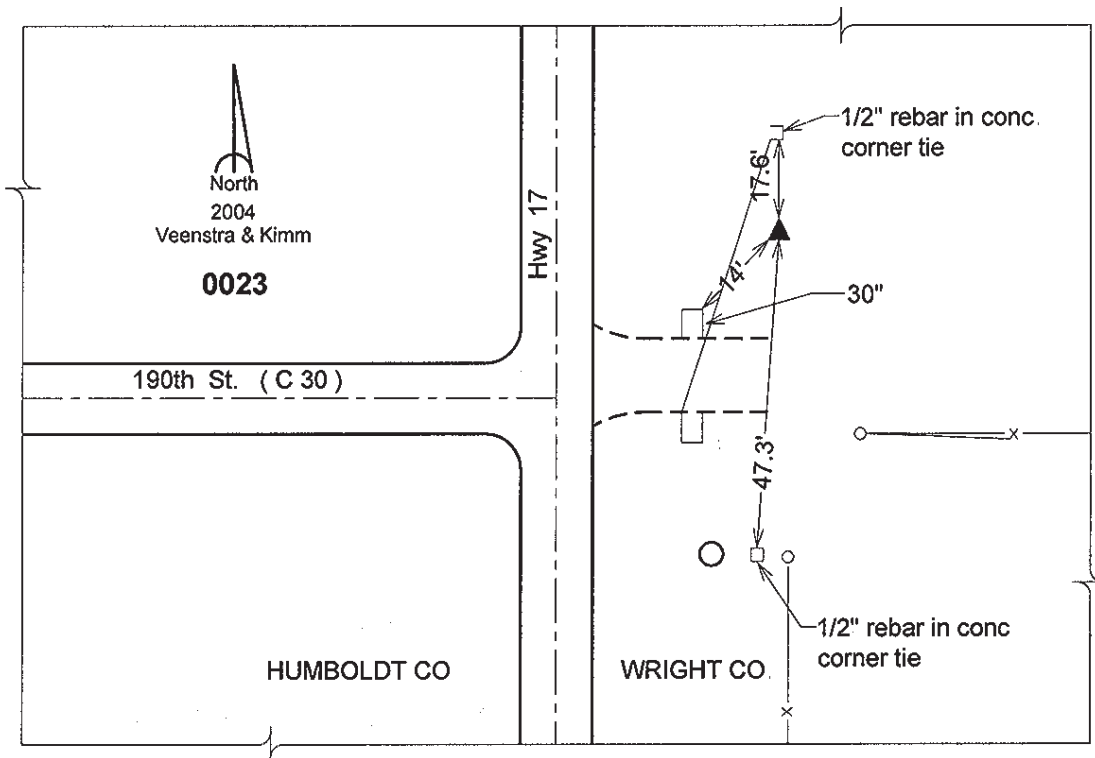
Latitude: **42°46'30.71419"N**

Longitude: **93°58'16.75513"W**

Mapping Angle: **-0°19'10"**

Combination Scale Factor: **0.999897860**

Monument Type: 5/8" dia. aluminum rod with 2-1/2" dia. aluminum cap & permanent magnet encased in a 5" dia. PVC pipe with aluminum access cover.



This document was prepared by DCI and GBC for use by Humboldt County, Iowa