

Reprinted on 10-29-2008
Humboldt County, Iowa
 Iowa North Zone (1401)
 Horiz. Datum: NAD83(1996)
 Vert. Datum: NAVD 1988
 US Survey Feet
2006

Point Name: **1032**

Designation: GPS Monument Number: 32, Wright Co. Iowa (set by V&K in 2004)

Northing: **3729957.99sft** Easting: **4794612.12sft**

Orthometric Height: **1119.28sft** Ellipsoid Height: **1025.69sft** **Geoid03**

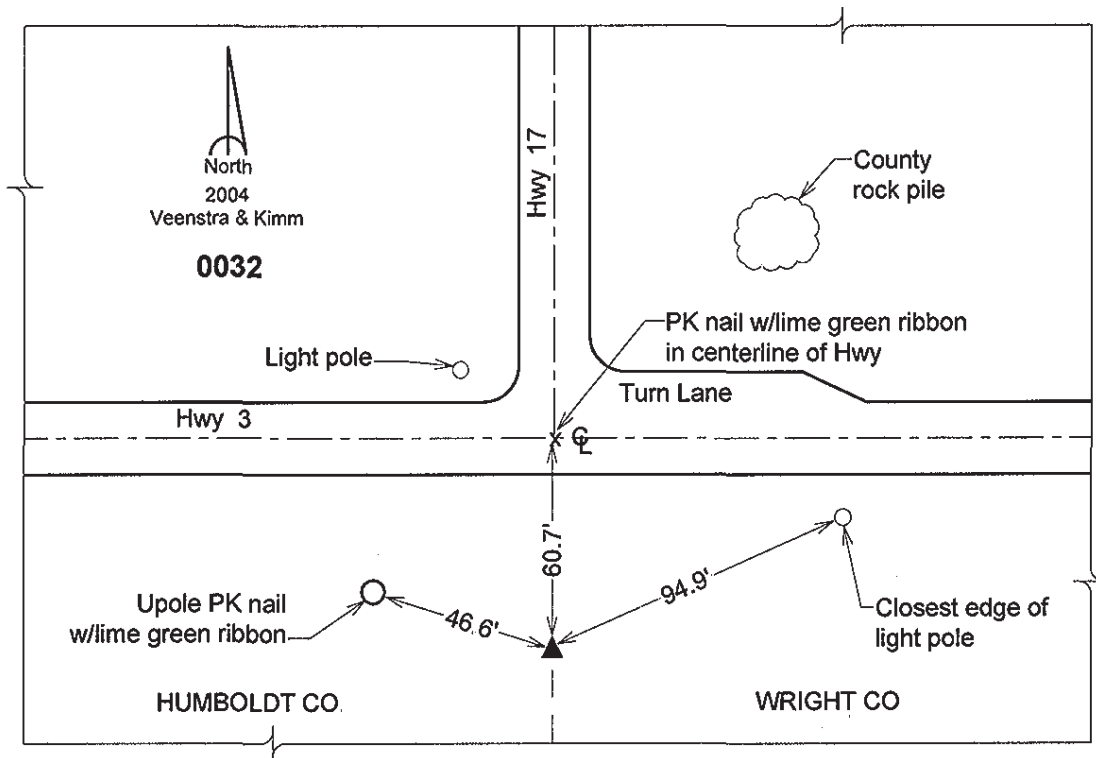
Latitude: **42°43'53.23493"N**

Longitude: **93°58'16.87309"W**

Mapping Angle: **-0°19'10"**

Combination Scale Factor: **0.999897050**

Monument Type: 5/8" dia. aluminum rod with 2-1/2" dia. aluminum cap & permanent magnet encased in a 5" dia. PVC pipe with aluminum access cover.



This document was prepared by DCI and GBC for use by Humboldt County, Iowa