

Reprinted on 10-29-2008
Humboldt County, Iowa
Iowa North Zone (1401)
Horiz. Datum: NAD83(1996)
Vert. Datum: NAVD 1988
US Survey Feet
2006

Point Name: 11

Designation: 2006 -011 Humboldt County GPS Control Pt.

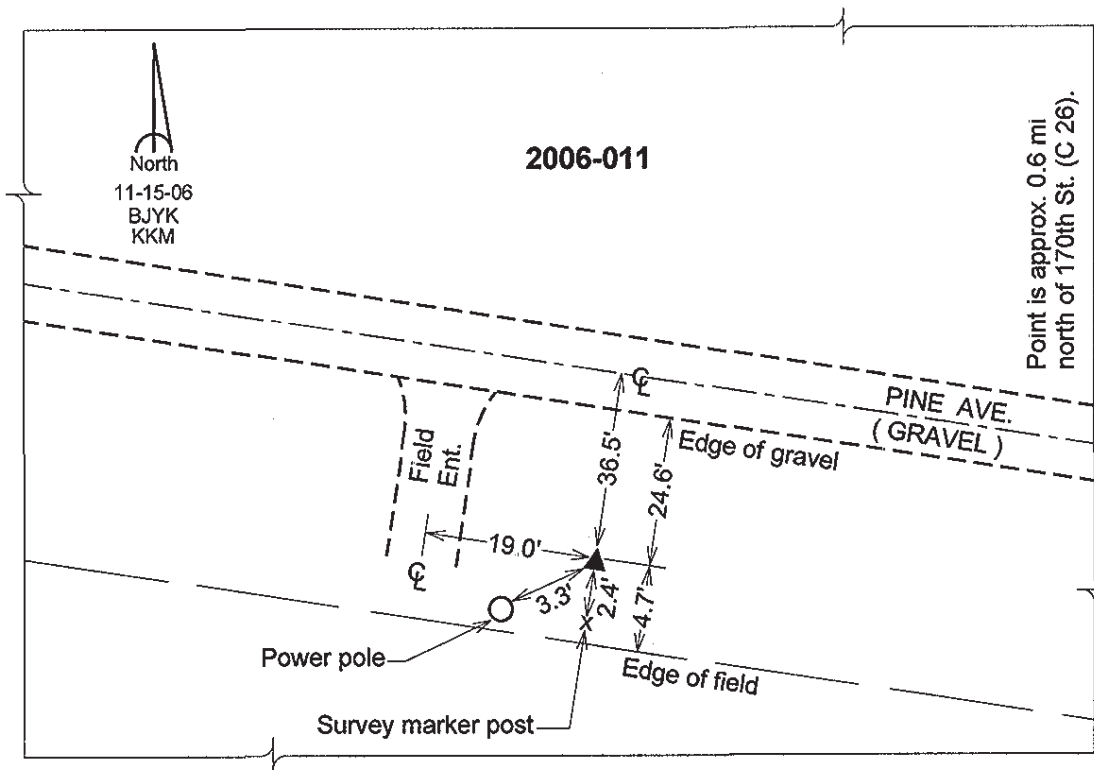
Northing: 3759780.31sft Easting: 4744273.61sft

Orthometric Height: 1149.37sft Ellipsoid Height: 1053.49sft Geoid03

Latitude: 42°48'44.49014"N Longitude: 94°09'34.47365"W

Mapping Angle: -0°26'49" Combination Scale Factor: 0.999898290

Monument Type: Berntsen Top Security Rod Monument with a 2-1/2" dia. domed survey cap and permanent magnet encased in a 5" dia. PVC pipe with a NGS style aluminum access cover.



This document was prepared by DCI and GBC for use by Humboldt County, Iowa