

Reprinted on 10-29-2008
Humboldt County, Iowa
Iowa North Zone (1401)
Horiz. Datum: NAD83(1996)
Vert. Datum: NAVD 1988
US Survey Feet
2006

Point Name: 116

Designation: NGS 2nd order vertical PID: NL0228 Designation: K 27

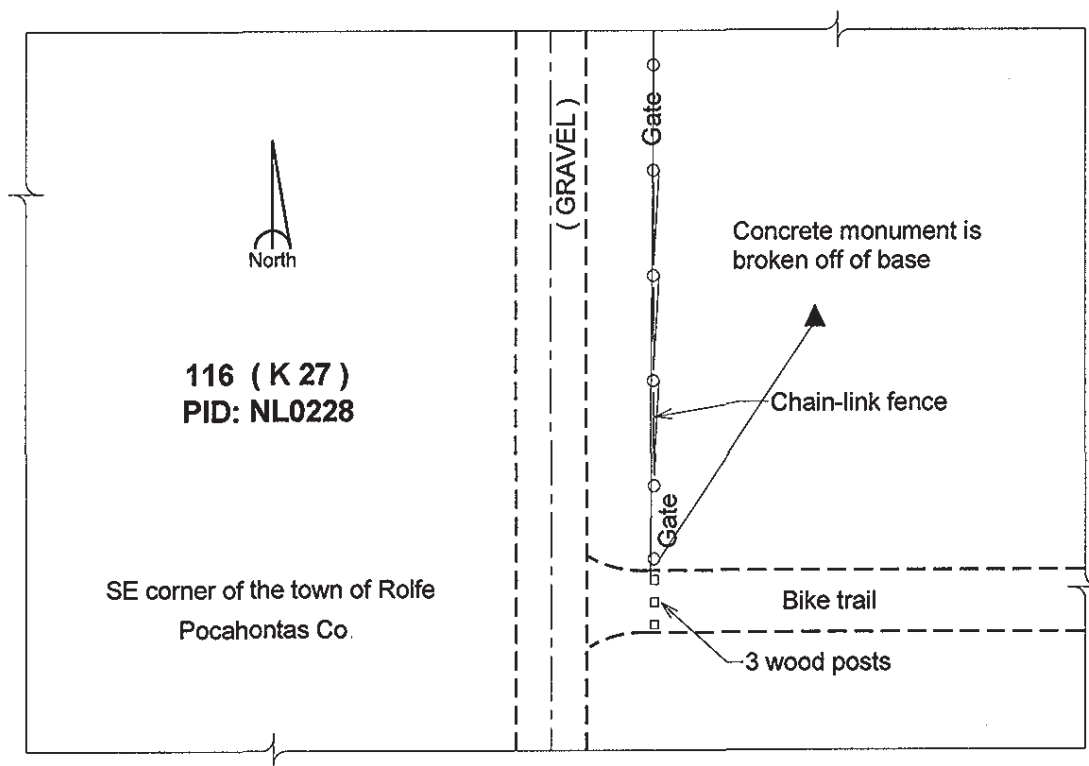
Northing: 3759954.81sft Easting: 4647238.16sft

Orthometric Height: 1180.39sft Ellipsoid Height: 1085.46sft Geoid03

Latitude: 42°48'36.68548"N Longitude: 94°31'16.31210"W

Mapping Angle: -0°41'32" Combination Scale Factor: 0.999896670

Monument Type: The station mark is a CGS benchmark disk stamped "K 27 1934" and set in the top of a concrete post projecting 2 feet above ground.



This document was prepared by DCI and GBC for use by Humboldt County, Iowa