

Reprinted on 10-29-2008
Humboldt County, Iowa
Iowa North Zone (1401)
Horiz. Datum: NAD83(1996)
Vert. Datum: NAVD 1988
US Survey Feet
2006

Point Name: **12**

Designation: 2006 -012 Humboldt County GPS Control Pt.

Northing: **3766023.27sft** Easting: **4731441.37sft**

Orthometric Height: **1131.13sft** Ellipsoid Height: **1035.19sft** **Geoid03**

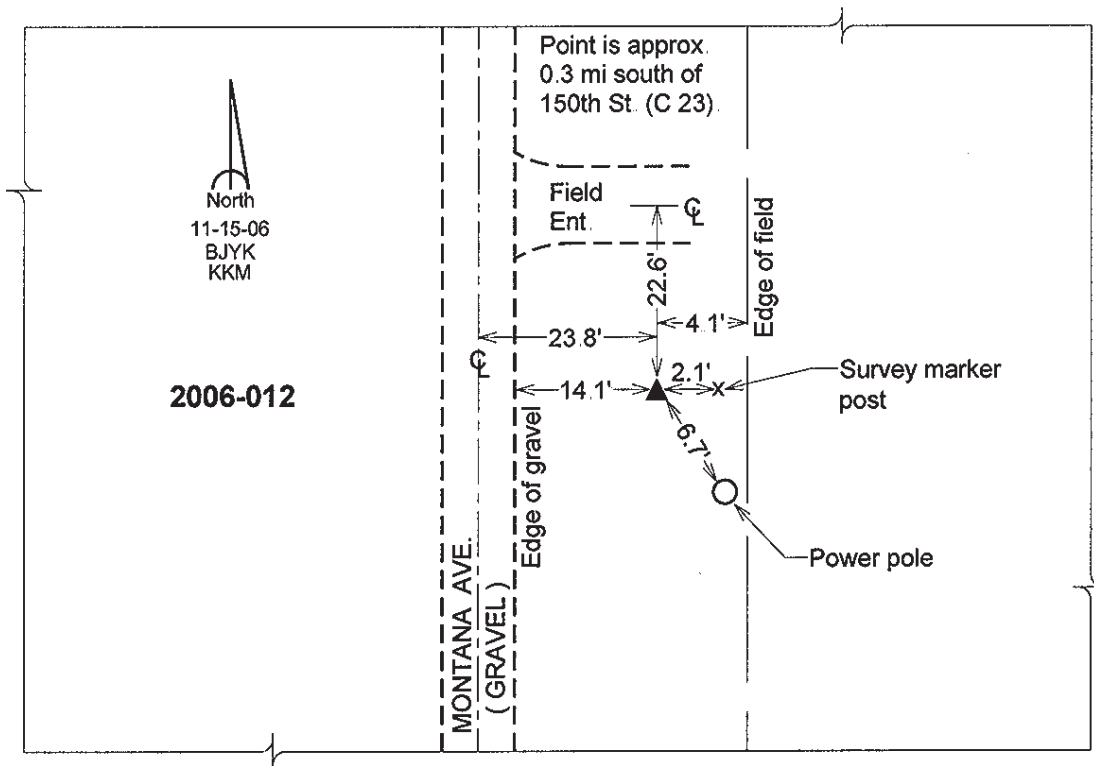
Latitude: **42°49'45.13108"N**

Longitude: **94°12'27.33571"W**

Mapping Angle: **-0°28'46"**

Combination Scale Factor: **0.999899940**

Monument Type: Berntsen Top Security Rod Monument with a 2-1/2" dia. domed survey cap and permanent magnet encased in a 5" dia. PVC pipe with a NGS style aluminum access cover.



This document was prepared by DCI and GBC for use by Humboldt County, Iowa