

Reprinted on 10-29-2008
Humboldt County, Iowa
 Iowa North Zone (1401)
 Horiz. Datum: NAD83(1996)
 Vert. Datum: NAVD 1988
 US Survey Feet
 2006

Point Name: 13

Designation: 2006 -013 Humboldt County GPS Control Pt.

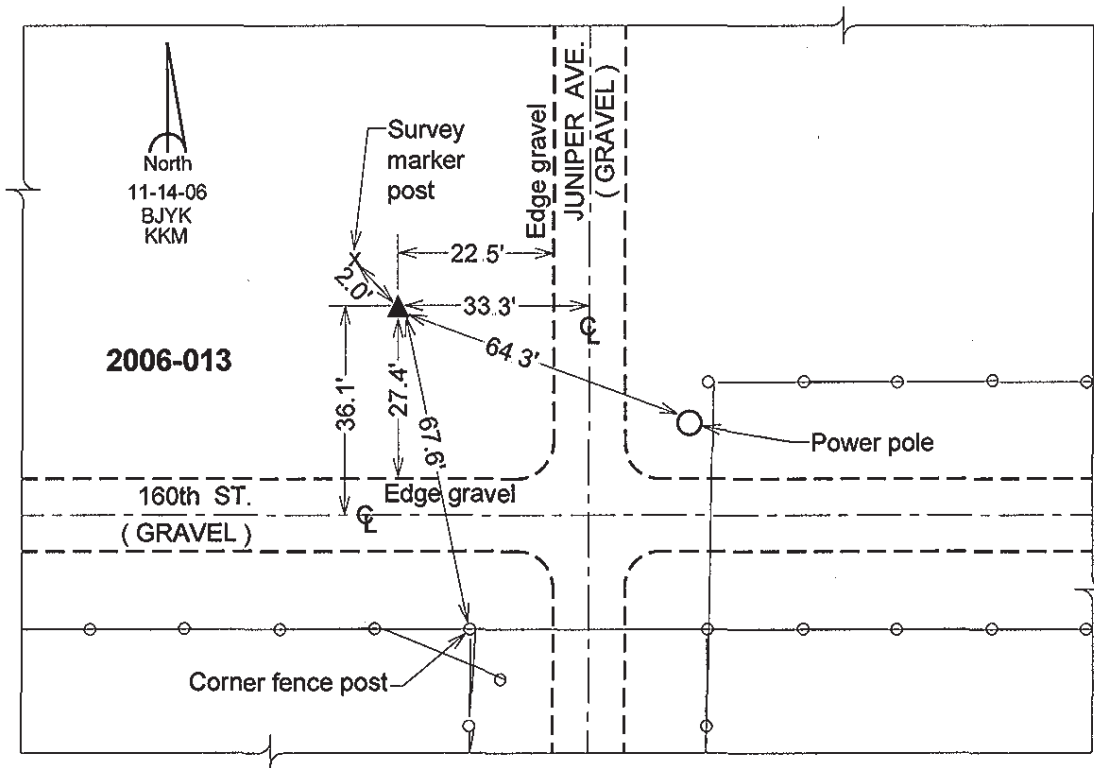
Northing: 3762747.72sft Easting: 4715563.60sft

Orthometric Height: 1125.30sft Ellipsoid Height: 1029.53sft **Geoid03**

Latitude: 42°49'11.40899"N Longitude: 94°16'00.01416"W

Mapping Angle: -0°31'11" Combination Scale Factor: 0.999899770

Monument Type: Berntsen Top Security Rod Monument with a 2-1/2" dia. domed survey cap and permanent magnet encased in a 5" dia. PVC pipe with a NGS style aluminum access cover.



This document was prepared by DCI and GBC for use by Humboldt County, Iowa