

Reprinted on 10-29-2008
Humboldt County, Iowa
Iowa North Zone (1401)
Horiz. Datum: NAD83(1996)
Vert. Datum: NAVD 1988
US Survey Feet
2006

Point Name: **14**

Designation: 2006 -014 Humboldt County GPS Control Pt.

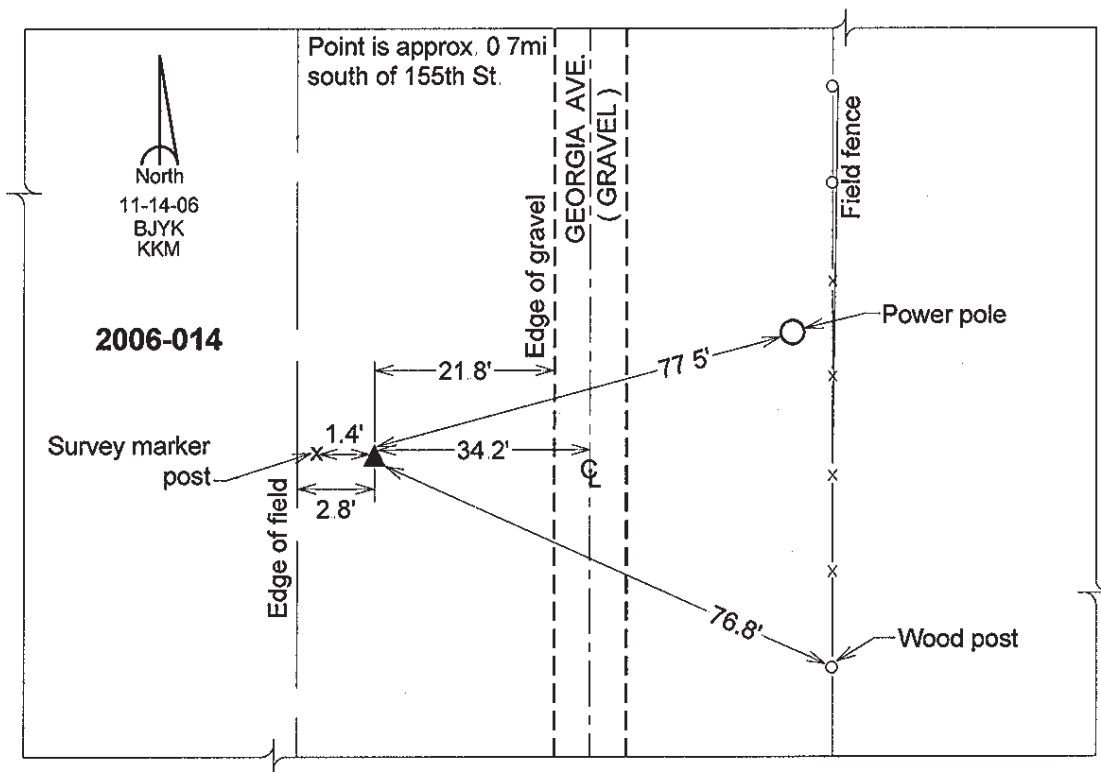
Northing: **3761815.31sft** Easting: **4699875.38sft**

Orthometric Height: **1147.45sft** Ellipsoid Height: **1051.90sft** **Geoid03**

Latitude: **42°49'00.74012"N** Longitude: **94°19'30.39246"W**

Mapping Angle: **-0°33'33"** Combination Scale Factor: **0.999898560**

Monument Type: Berntsen Top Security Rod Monument with a 2-1/2" dia. domed survey cap and permanent magnet encased in a 5" dia. PVC pipe with a NGS style aluminum access cover.



This document was prepared by DCI and GBC for use by Humboldt County, Iowa