

Reprinted on 10-29-2008  
**Humboldt County, Iowa**  
Iowa North Zone (1401)  
Horiz. Datum: NAD83(1996)  
Vert. Datum: NAVD 1988  
US Survey Feet  
2006

Point Name: 16

**Designation:** 2006 -016 Humboldt County GPS Control Pt.

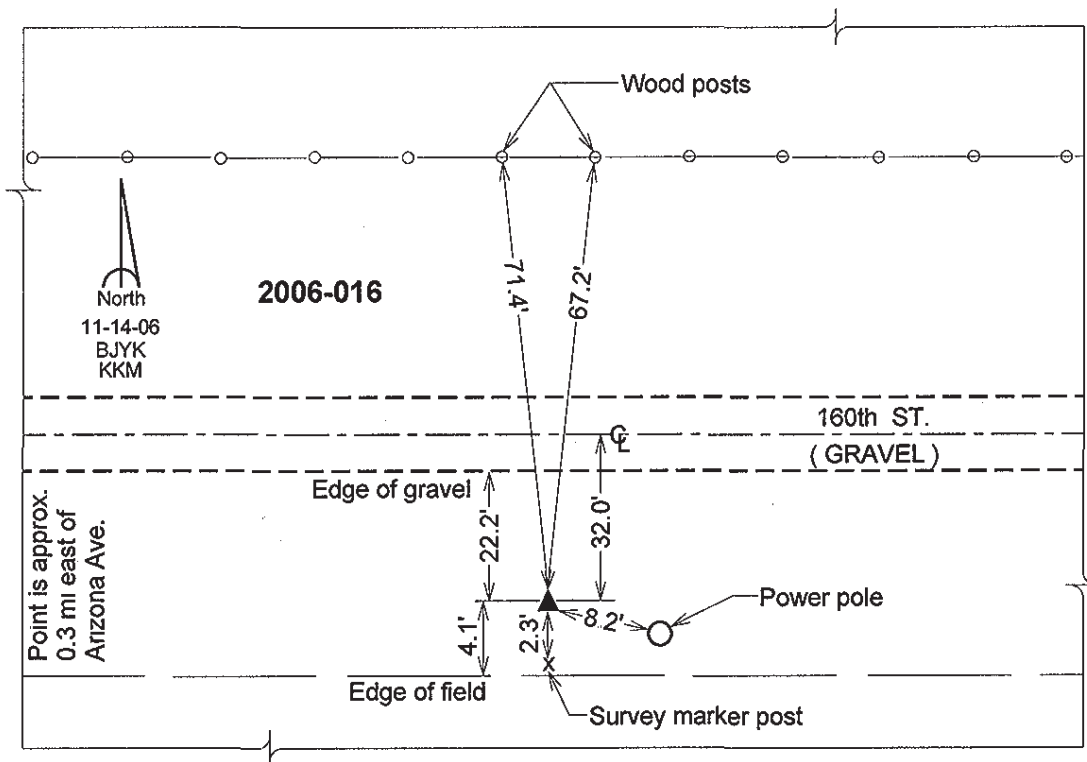
Northing: 3763080.00sft Easting: 4670016.04sft

Orthometric Height: 1128.18sft Ellipsoid Height: 1033.08sft **Geoid03**

Latitude: 42°49'10.15914"N Longitude: 94°26'11.20062"W

Mapping Angle: -0°38'05" Combination Scale Factor: 0.999899580

**Monument Type:** Berntsen Top Security Rod Monument with a 2-1/2" dia. domed survey cap and permanent magnet encased in a 5" dia. PVC pipe with a NGS style aluminum access cover.



This document was prepared by DCI and GBC for use by Humboldt County, Iowa