

Reprinted on 10-29-2008  
**Humboldt County, Iowa**  
 Iowa North Zone (1401)  
 Horiz. Datum: NAD83(1996)  
 Vert. Datum: NAVD 1988  
 US Survey Feet  
 2006

Point Name: 17

Designation: 2006 -017 Humboldt County GPS Control Pt.

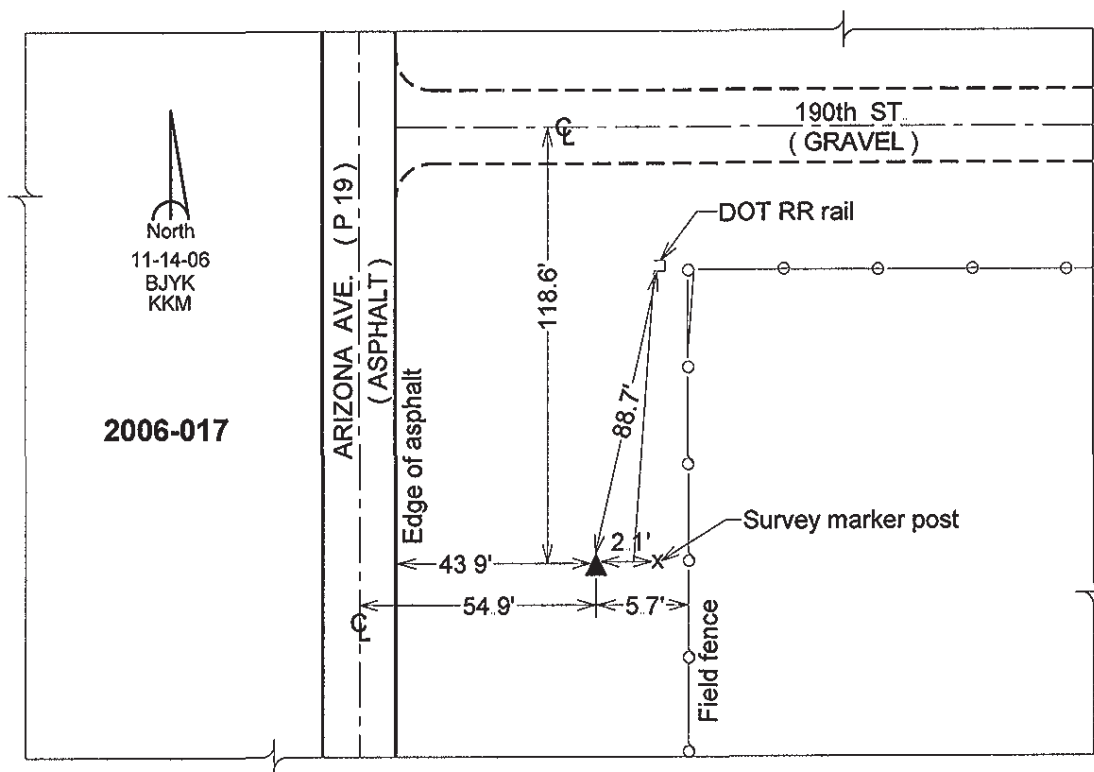
Northing: 3747013.13sft Easting: 4668116.84sft

Orthometric Height: 1197.77sft Ellipsoid Height: 1102.62sft Geoid03

Latitude: 42°46'31.25120"N Longitude: 94°26'34.27853"W

Mapping Angle: -0°38'20" Combination Scale Factor: 0.999894520

**Monument Type:** Berntsen Top Security Rod Monument with a 2-1/2" dia. domed survey cap and permanent magnet encased in a 5" dia. PVC pipe with a NGS style aluminum access cover.



This document was prepared by DCI and GBC for use by Humboldt County, Iowa.