

Reprinted on 10-29-2008
Humboldt County, Iowa
Iowa North Zone (1401)
Horiz. Datum: NAD83(1996)
Vert. Datum: NAVD 1988
US Survey Feet
2006

Point Name: 18

Designation: 2006 -018 Humboldt County GPS Control Pt.

Northing: 3746427.77sft Easting: 4683982.64sft

Orthometric Height: 1143.54sft Ellipsoid Height: 1048.21sft **Geoid03**

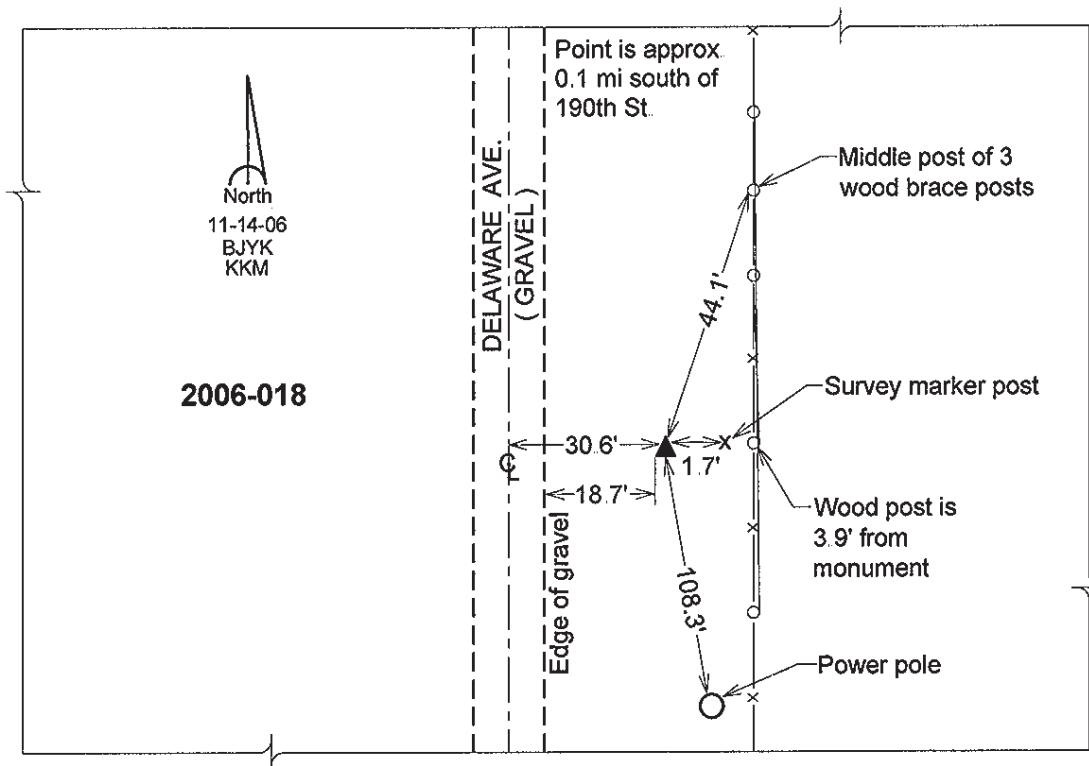
Latitude: 42°46'27.16245"N

Longitude: 94°23'01.46702"W

Mapping Angle: -0°35'56"

Combination Scale Factor: 0.999897080

Monument Type: Berntsen Top Security Rod Monument with a 2-1/2" dia. domed survey cap and permanent magnet encased in a 5" dia. PVC pipe with a NGS style aluminum access cover.



This document was prepared by DCI and GBC for use by Humboldt County, Iowa