

Reprinted on 10-29-2008  
**Humboldt County, Iowa**  
 Iowa North Zone (1401)  
 Horiz. Datum: NAD83(1996)  
 Vert Datum: NAVD 1988  
 US Survey Feet  
 2006

Point Name: 19

**Designation:** 2006 -019 Humboldt County GPS Control Pt

Northing: 3744480.52sft Easting: 4699718.23sft

Orthometric Height: 1138.42sft Ellipsoid Height: 1042.87sft **Geoid03**

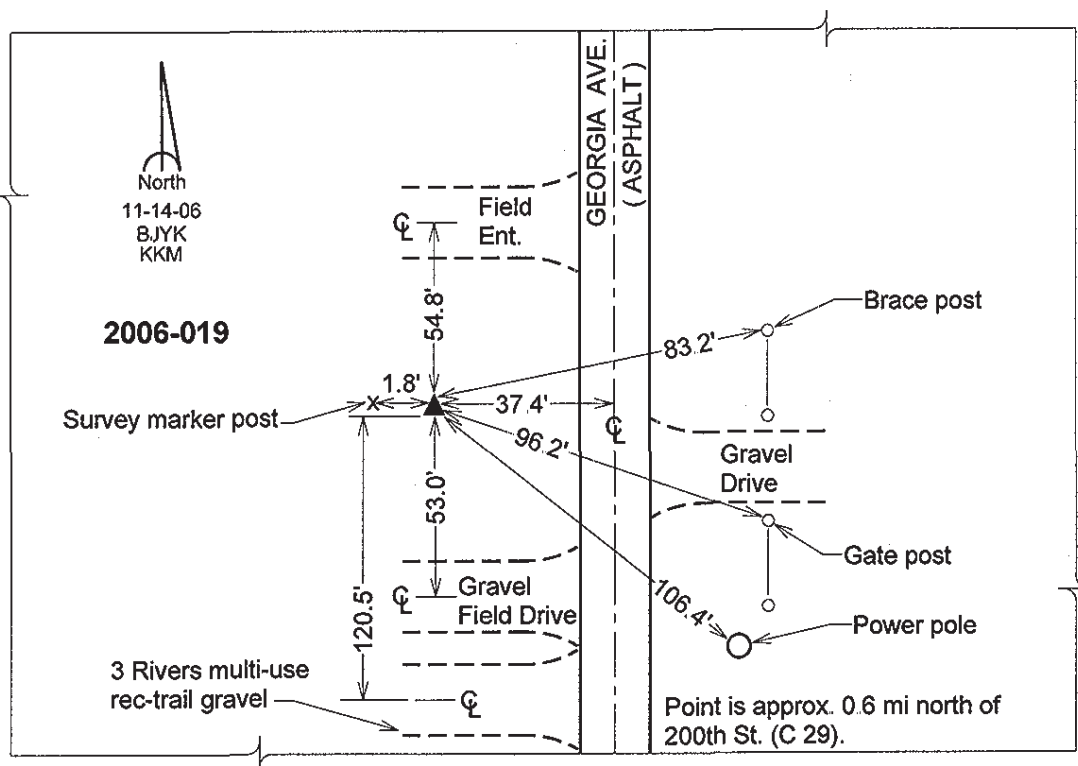
Latitude: 42°46'09.49920"N

Longitude: 94°19'30.23100"W

Mapping Angle: -0°33'33"

Combination Scale Factor: 0.999897180

**Monument Type:** Berntsen Top Security Rod Monument with a 2-1/2" dia. domed survey cap and permanent magnet encased in a 5" dia. PVC pipe with a NGS style aluminum access cover.



*This document was prepared by DCI and GBC for use by Humboldt County, Iowa.*