

Reprinted on 10-29-2008
Humboldt County, Iowa
Iowa North Zone (1401)
Horiz. Datum: NAD83(1996)
Vert. Datum: NAVD 1988
US Survey Feet
2006

Point Name: 2

Designation: 2006 -002 Humboldt County GPS Control Pt.

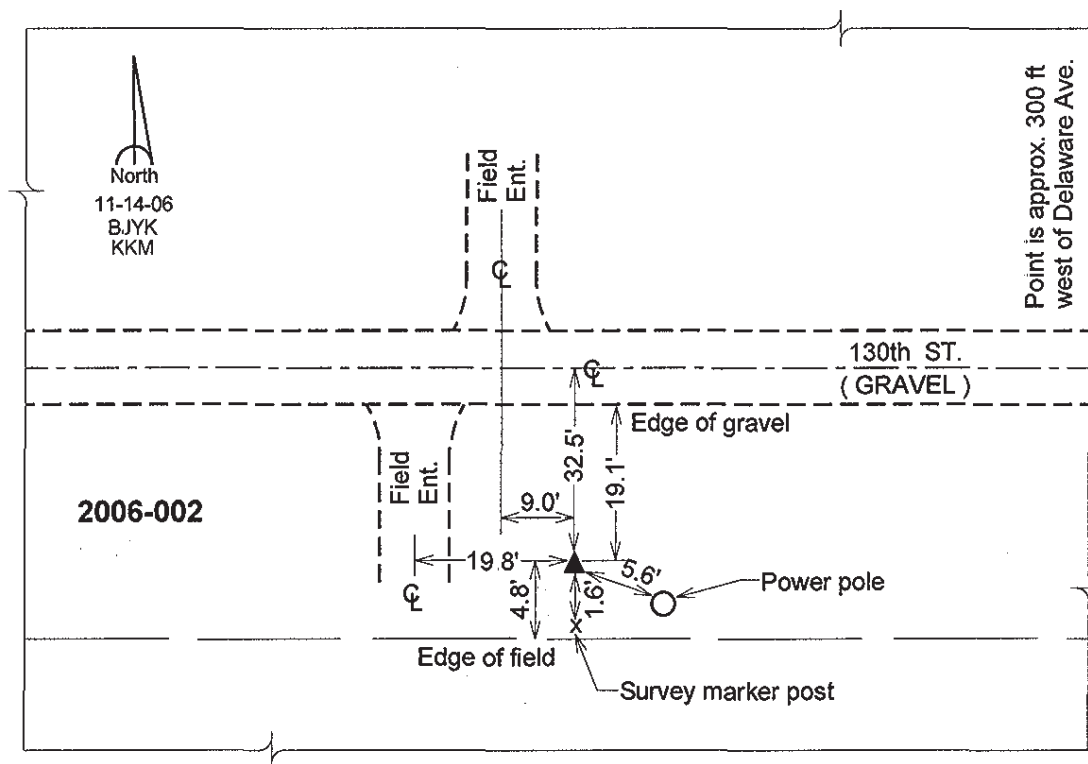
Northing: 3778792.27sft Easting: 4683767.82sft

Orthometric Height: 1148.36sft Ellipsoid Height: 1053.16sft Geoid03

Latitude: 42°51'46.81896"N Longitude: 94°23'08.89430"W

Mapping Angle: -0°36'01" Combination Scale Factor: 0.999900920

Monument Type: Berntsen Top Security Rod Monument with a 2-1/2" dia. domed survey cap and permanent magnet encased in a 5" dia. PVC pipe with a NGS style aluminum access cover



This document was prepared by DCI and GBC for use by Humboldt County, Iowa