

Reprinted on 10-29-2008
Humboldt County, Iowa
Iowa North Zone (1401)
Horiz. Datum: NAD83(1996)
Vert. Datum: NAVD 1988
US Survey Feet
2006

Point Name: 20

Designation: 2006 -020 Humboldt County GPS Control Pt.

Northing: 3746499.40sft Easting: 4715515.79sft

Orthometric Height: 1155.17sft Ellipsoid Height: 1059.47sft Geoid03

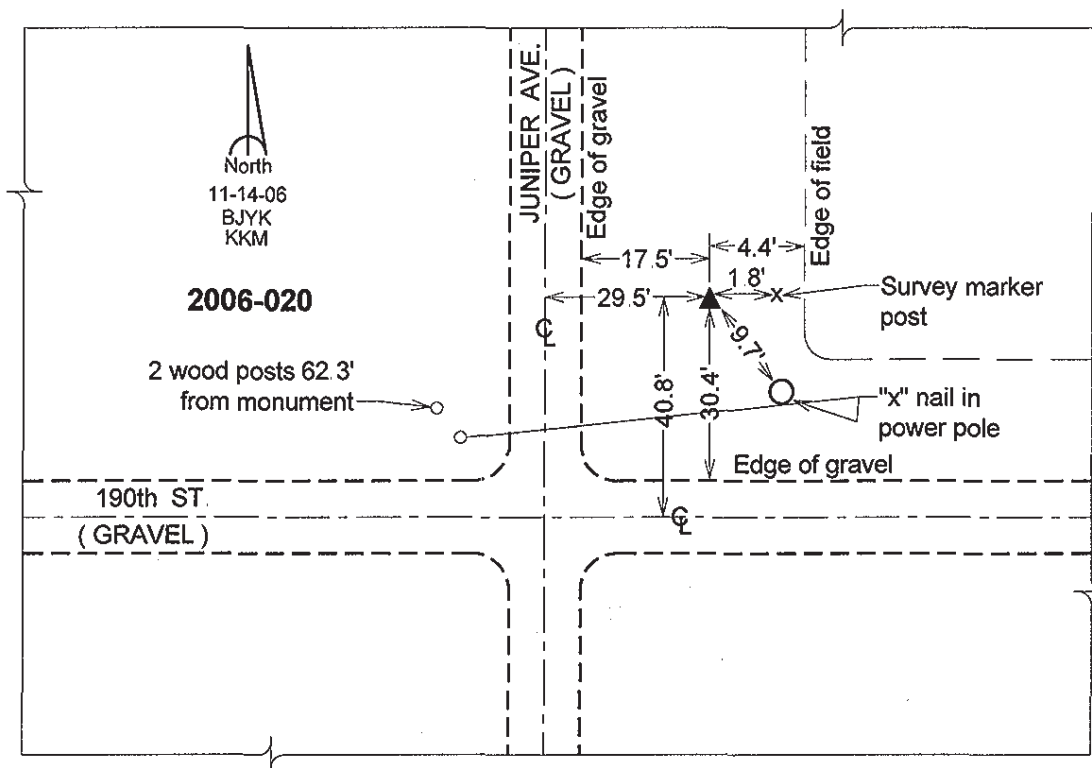
Latitude: 42°46'30.90978"N

Longitude: 94°15'58.67944"W

Mapping Angle: -0°31'10"

Combination Scale Factor: 0.999896580

Monument Type: Berntsen Top Security Rod Monument with a 2-1/2" dia. domed survey cap and permanent magnet encased in a 5" dia. PVC pipe with a NGS style aluminum access cover.



This document was prepared by DCI and GBC for use by Humboldt County, Iowa