

Reprinted on 10-29-2008
Humboldt County, Iowa
Iowa North Zone (1401)
Horiz. Datum: NAD83(1996)
Vert. Datum: NAVD 1988
US Survey Feet
2006

Point Name: **203**

Designation: FBN laham horizontal and 2nd order vertical PID: NK0459 Designation: L 28

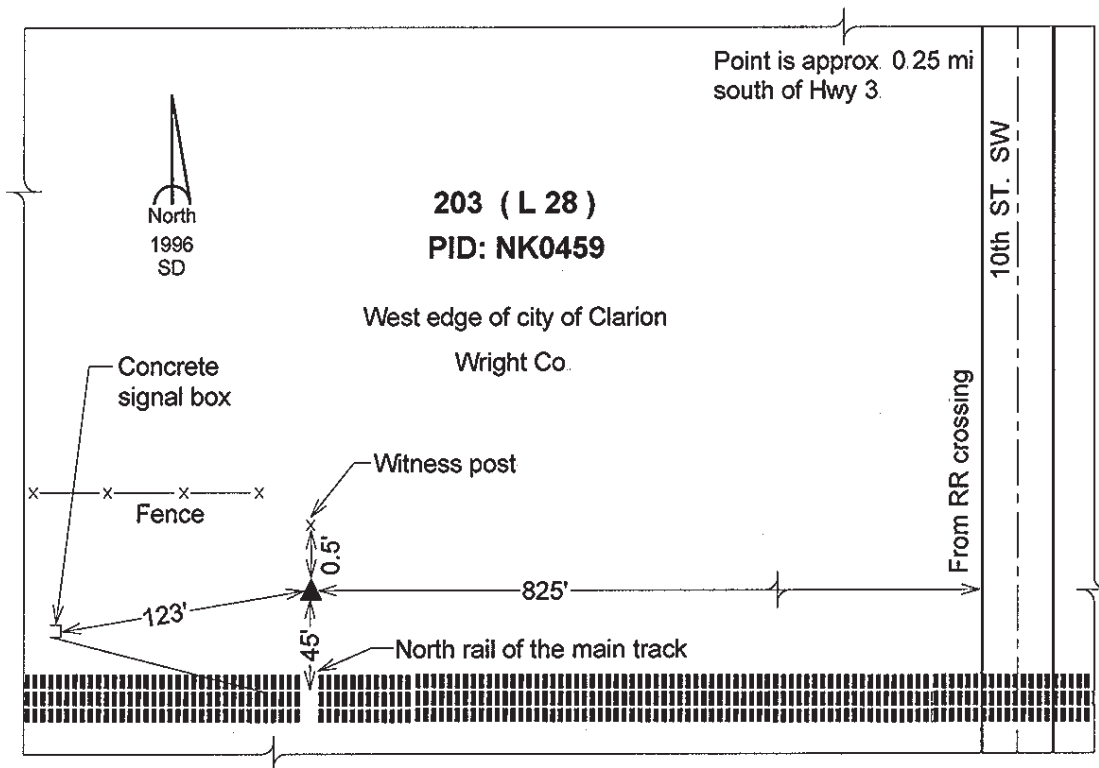
Northing: **3728441.55sft** Easting: **4854556.12sft**

Orthometric Height: **1160.36sft** Ellipsoid Height: **1069.84sft** **Geoid03**

Latitude: **42°43'40.77550"N** Longitude: **93°44'53.60575"W**

Mapping Angle: **-0°10'06"** Combination Scale Factor: **0.999894880**

Monument Type: The station mark is a CGS benchmark disk stamped "L 28 1934" and set in the top of a concrete monument.



This document was prepared by DCI and GBC for use by Humboldt County, Iowa