

Reprinted on 10-29-2008
Humboldt County, Iowa
Iowa North Zone (1401)
Horiz. Datum: NAD83(1996)
Vert. Datum: NAVD 1988
US Survey Feet
2006

Point Name: **204**

Designation: NGS 2nd order vertical control station. PID: NL0036 Designation: P 27

Northing: **3753662.08sft** Easting: **4679118.62sft**

Orthometric Height: **1117.50sft** Ellipsoid Height: **1022.26sft** **Geoid03**

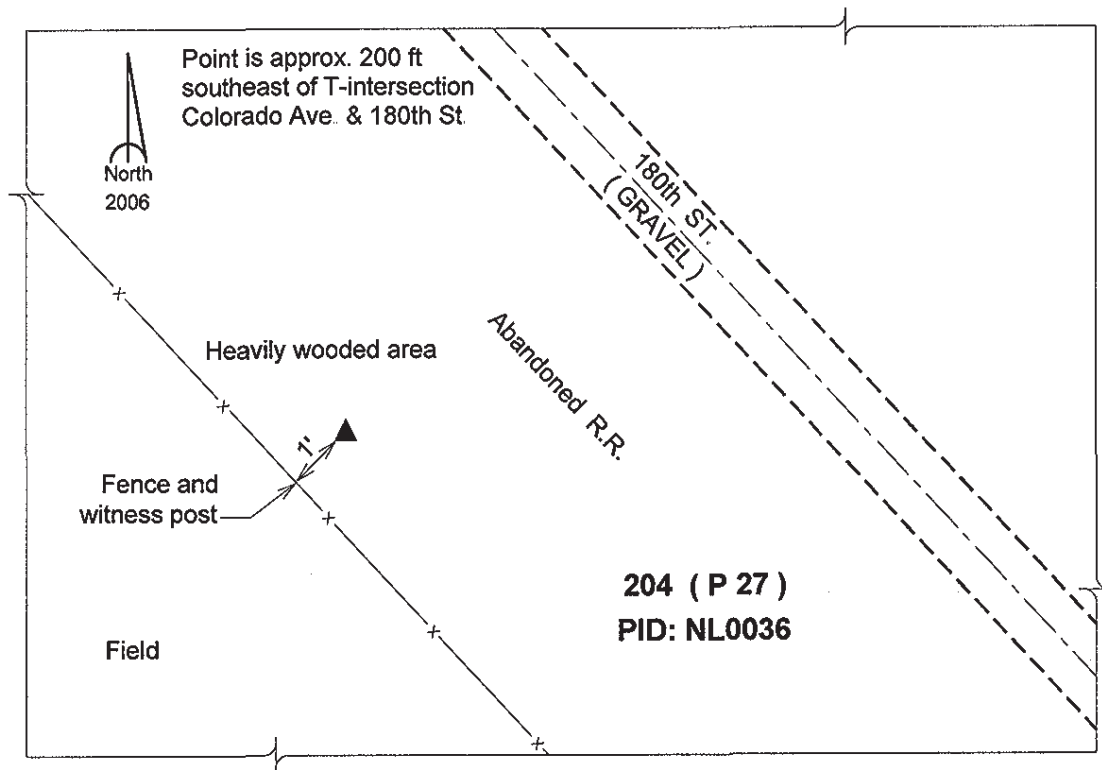
Latitude: **42°47'38.11194"N**

Longitude: **94°24'07.71791"W**

Mapping Angle: **-0°36'41"**

Combination Scale Factor: **0.999899020**

Monument Type: The station mark is a CGS benchmark disk stamped "P 27 1934" and set in the top of a concrete monument.



This document was prepared by DCI and GBC for use by Humboldt County, Iowa.