

Reprinted on 10-29-2008
Humboldt County, Iowa
Iowa North Zone (1401)
Horiz. Datum: NAD83(1996)
Vert. Datum: NAVD 1988
US Survey Feet
2006

Point Name: **209**

Designation: NGS 1st order horizontal station. PID: NL0712 Designation: HARDY

Northing: **3766127.57**sft Easting: **4762990.56**sft

Orthometric Height: **1173.37**sft Ellipsoid Height: **1077.53**sft **Geoid03**

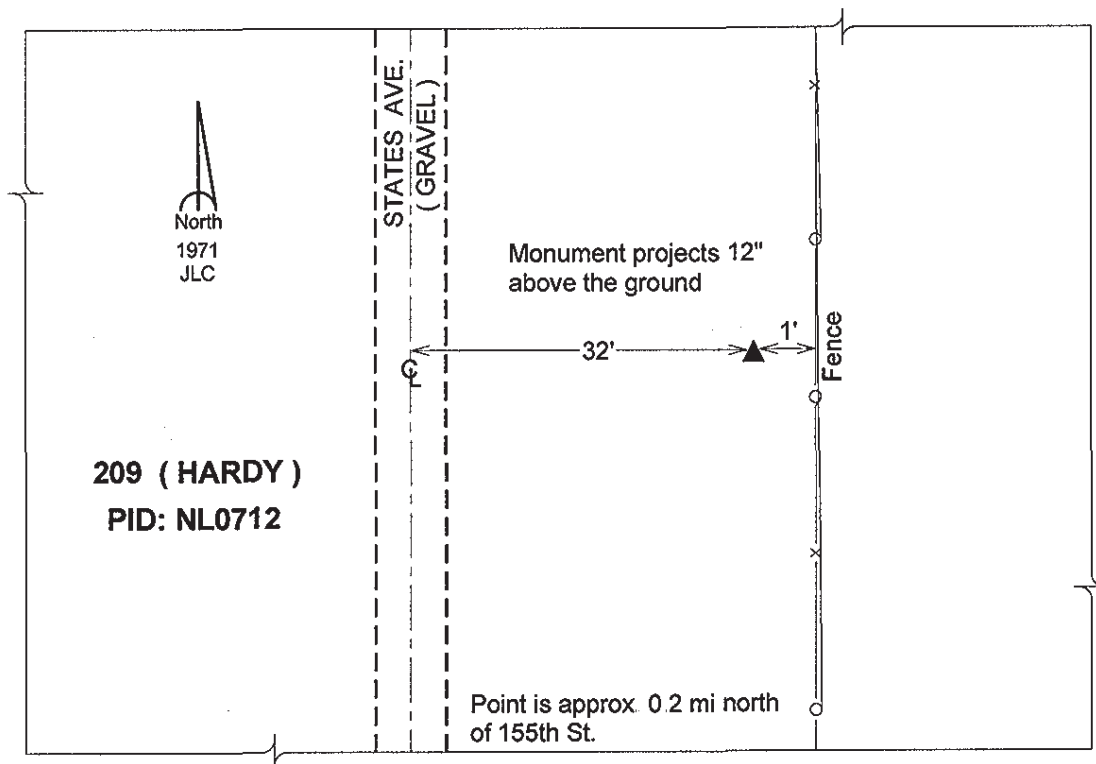
Latitude: **42°49'48.55295"N**

Longitude: **94°05'23.95324"W**

Mapping Angle: **-0°23'59"**

Combination Scale Factor: **0.999897970**

Monument Type: The station mark is a triangulation disk stamped "HARDY 1938" and set in the top of a concrete monument.



This document was prepared by DCI and GBC for use by Humboldt County, Iowa.