

Reprinted on 10-29-2008  
Humboldt County, Iowa  
Iowa North Zone (1401)  
Horiz. Datum: NAD83(1996)  
Vert. Datum: NAVD 1988  
US Survey Feet  
2006

Point Name: 24

Designation: 2006 -024 Humboldt County GPS Control Pt.

Northing: 3746972.83sft Easting: 4778827.44sft

Orthometric Height: 1130.34sft Ellipsoid Height: 1035.37sft Geoid03

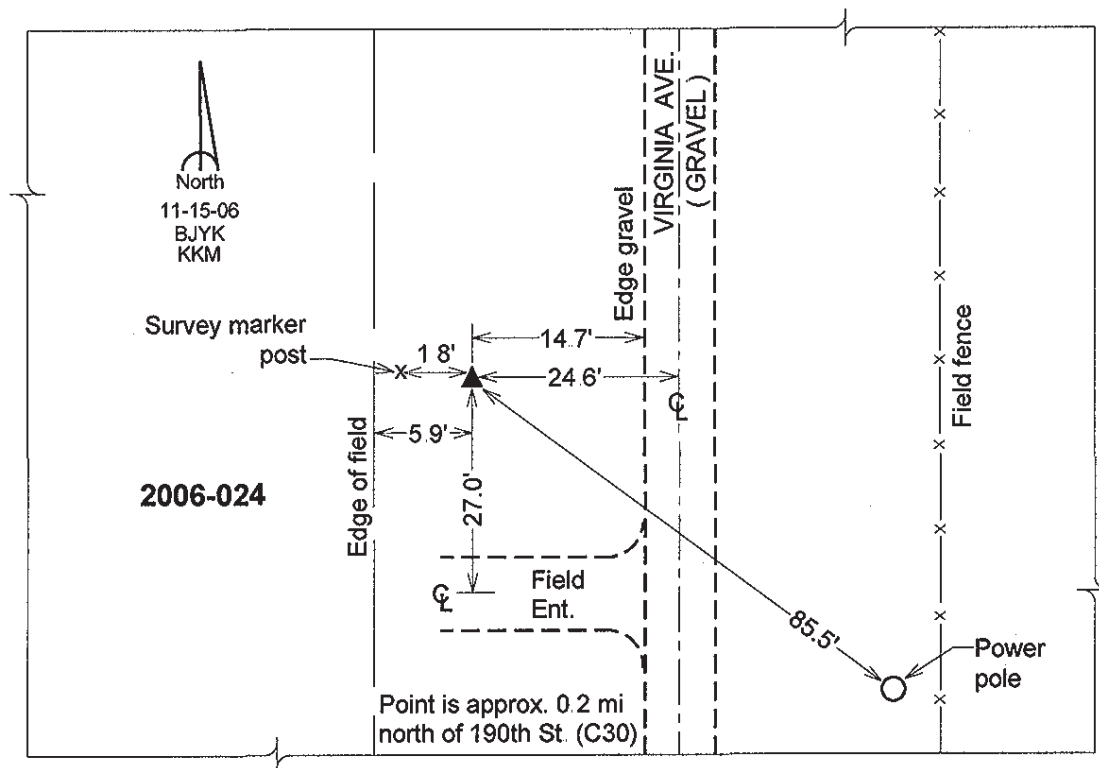
Latitude: 42°46'40.38284"N

Longitude: 94°01'49.80393"W

Mapping Angle: -0°21'34"

Combination Scale Factor: 0.999897820

**Monument Type:** Berntsen Top Security Rod Monument with a 2-1/2" dia. domed survey cap and permanent magnet encased in a 5" dia. PVC pipe with a NGS style aluminum access cover.



This document was prepared by DCI and GBC for use by Humboldt County, Iowa.