

Reprinted on 10-29-2008
Humboldt County, Iowa
 Iowa North Zone (1401)
 Horiz. Datum: NAD83(1996)
 Vert. Datum: NAVD 1988
 US Survey Feet
 2006

Point Name: 25

Designation: 2006 -025 Humboldt County GPS Control Pt.

Northing: 3730046.16sft Easting: 4777901.62sft

Orthometric Height: 1127.73sft Ellipsoid Height: 1033.38sft Geoid03

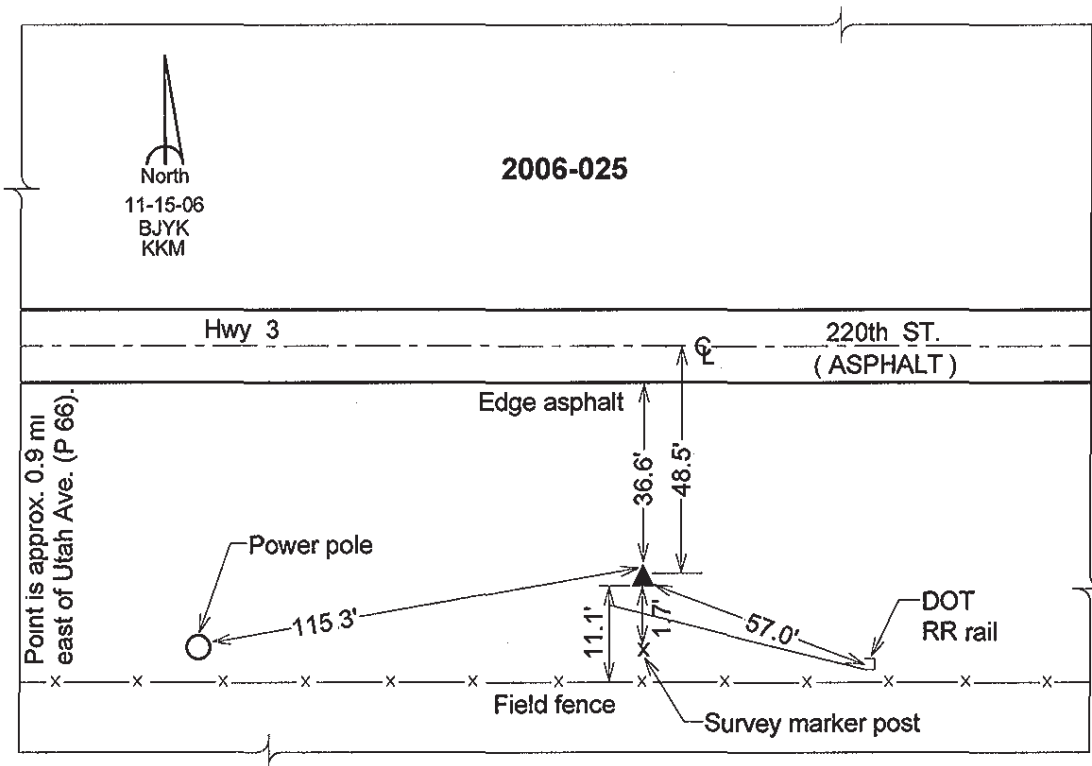
Latitude: 42°43'53.12487"N

Longitude: 94°02'00.78568"W

Mapping Angle: -0°21'42"

Combination Scale Factor: 0.999896680

Monument Type: Berntsen Top Security Rod Monument with a 2-1/2" dia. domed survey cap and permanent magnet encased in a 5" dia. PVC pipe with a NGS style aluminum access cover.



This document was prepared by DCI and GBC for use by Humboldt County, Iowa