

Reprinted on 10-29-2008
Humboldt County, Iowa
Iowa North Zone (1401)
Horiz. Datum: NAD83(1996)
Vert. Datum: NAVD 1988
US Survey Feet
2006

Point Name: **26**

Designation: 2006 -026 Humboldt County GPS Control Pt.

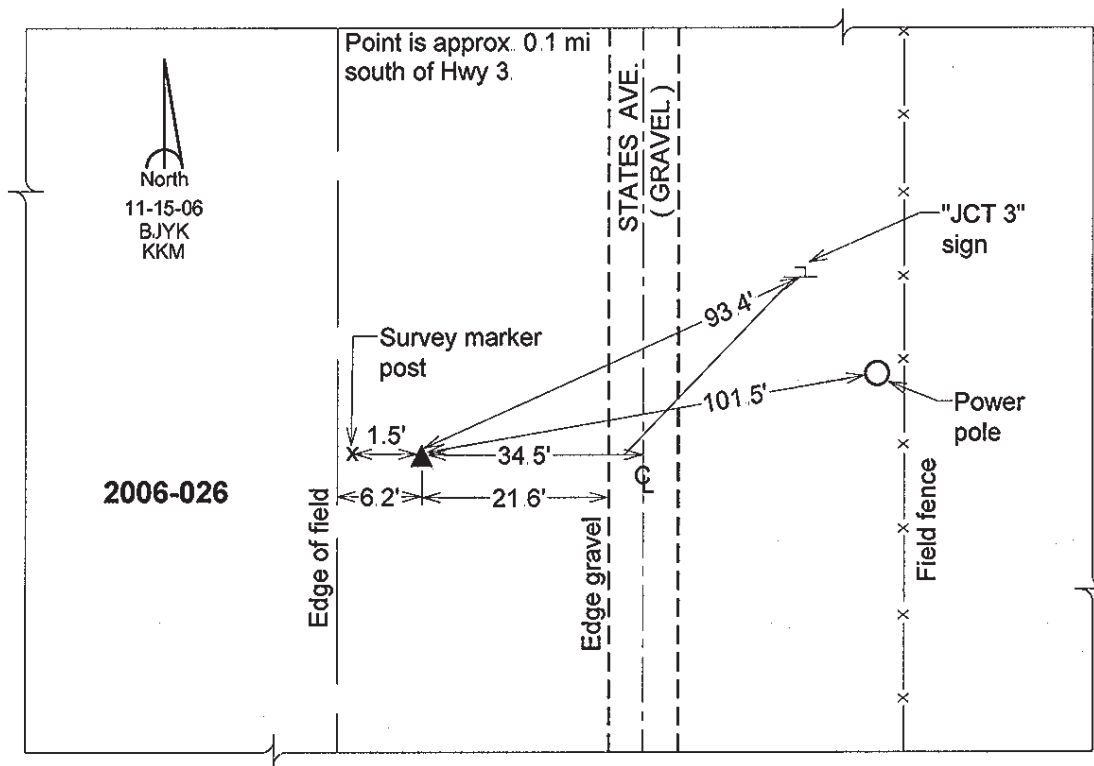
Northing: **3729709.18sft** Easting: **4762687.53sft**

Orthometric Height: **1129.53sft** Ellipsoid Height: **1034.68sft** **Geoid03**

Latitude: **42°43'48.79737"N** Longitude: **94°05'24.60796"W**

Mapping Angle: **-0°24'00"** Combination Scale Factor: **0.999896600**

Monument Type: Berntsen Top Security Rod Monument with a 2-1/2" dia. domed survey cap and permanent magnet encased in a 5" dia. PVC pipe with a NGS style aluminum access cover.



This document was prepared by DCI and GBC for use by Humboldt County, Iowa