

Reprinted on 10-29-2008  
**Humboldt County, Iowa**  
Iowa North Zone (1401)  
Horiz. Datum: NAD83(1996)  
Vert. Datum: NAVD 1988  
US Survey Feet  
**2006**

Point Name: **27**

**Designation:** 2006 -027 Humboldt County GPS Control Pt.

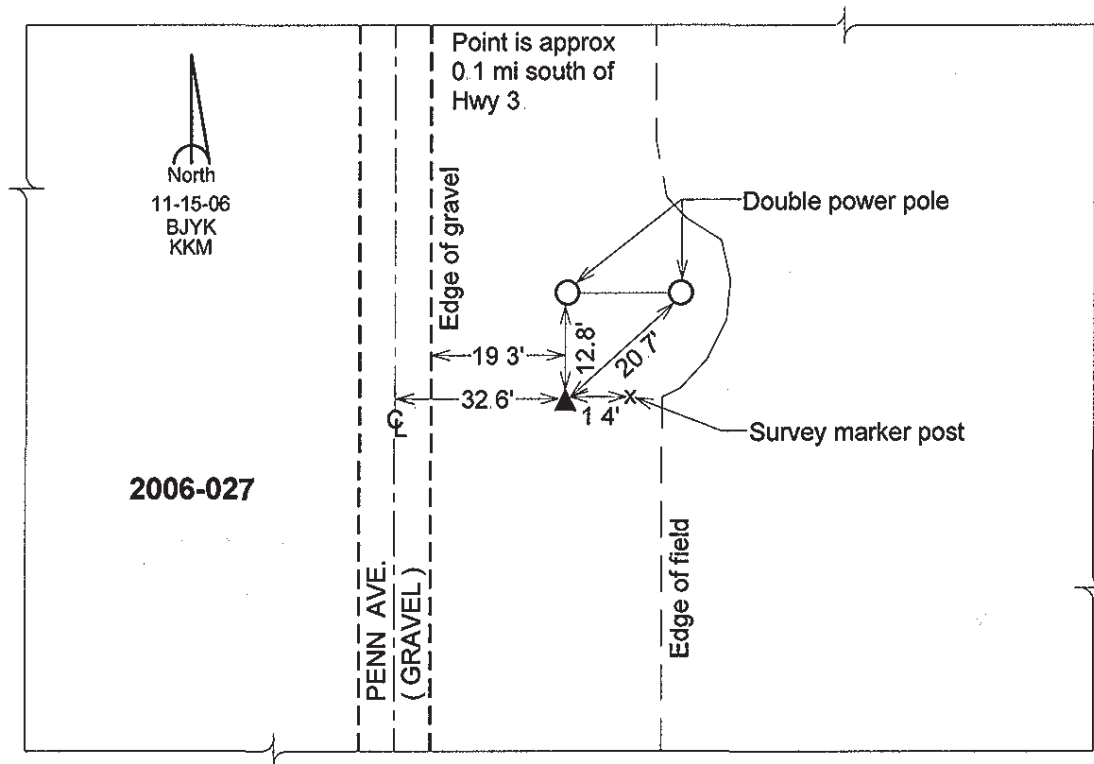
Northing: **3729829.18sft** Easting: **4746895.62sft**

Orthometric Height: **1148.88sft** Ellipsoid Height: **1053.67sft** **Geoid03**

Latitude: **42°43'48.83942"N** Longitude: **94°08'56.21115"W**

Mapping Angle: **-0°26'23"** Combination Scale Factor: **0.999895690**

**Monument Type:** Berntsen Top Security Rod Monument with a 2-1/2" dia. domed survey cap and permanent magnet encased in a 5" dia. PVC pipe with a NGS style aluminum access cover.



This document was prepared by DCI and GBC for use by Humboldt County, Iowa