

Reprinted on 10-29-2008  
**Humboldt County, Iowa**  
 Iowa North Zone (1401)  
 Horiz. Datum: NAD83(1996)  
 Vert. Datum: NAVD 1988  
 US Survey Feet  
**2006**

Point Name: 29

**Designation:** 2006 -029 Humboldt County GPS Control Pt.

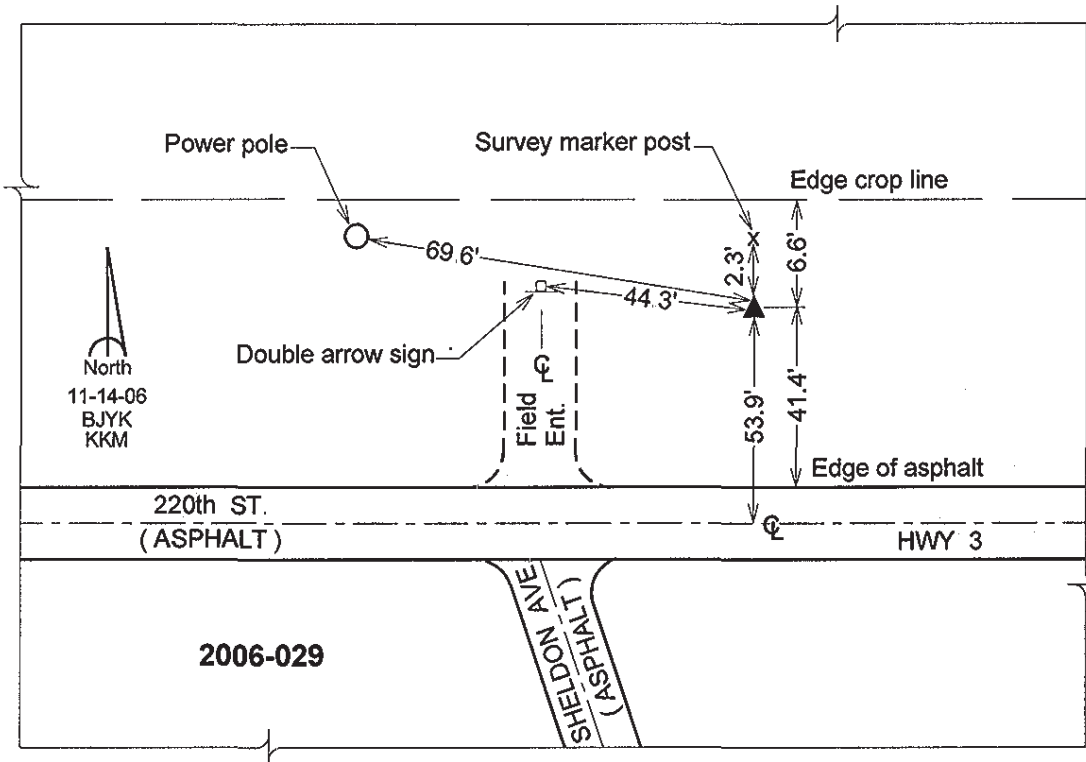
Northing: 3730715.82sft Easting: 4716613.01sft

Orthometric Height: 1123.41sft Ellipsoid Height: 1027.89sft **Geoid03**

Latitude: 42°43'55.10186"N Longitude: 94°15'42.06083"W

Mapping Angle: -0°30'58" Combination Scale Factor: 0.999896960

**Monument Type:** Berntsen Top Security Rod Monument with a 2-1/2" dia. domed survey cap and permanent magnet encased in a 5" dia. PVC pipe with a NGS style aluminum access cover.



This document was prepared by DCI and GBC for use by Humboldt County, Iowa