

Reprinted on 10-29-2008
Humboldt County, Iowa
Iowa North Zone (1401)
Horiz. Datum: NAD83(1996)
Vert. Datum: NAVD 1988
US Survey Feet
2006

Point Name: 3

Designation: 2006 -003 Humboldt County GPS Control Pt.

Northing: 3779342.62sft Easting: 4700053.39sft

Orthometric Height: 1156.03sft Ellipsoid Height: 1060.55sft Geoid03

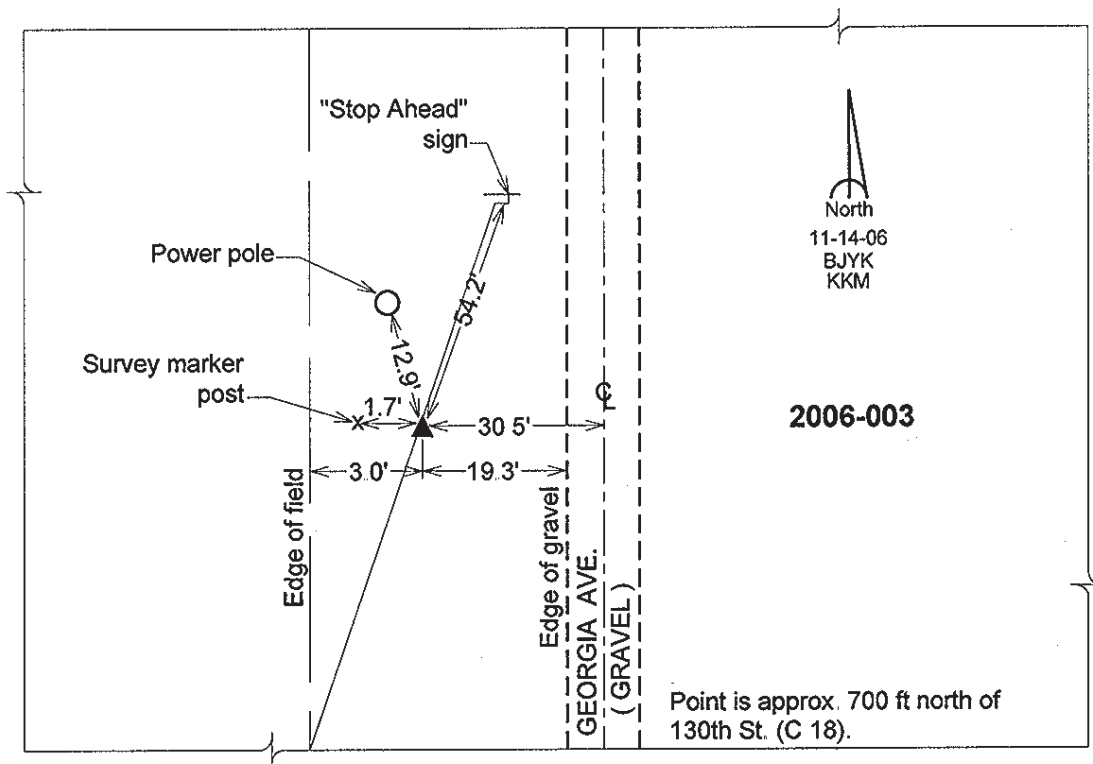
Latitude: 42°51'53.88277"N

Longitude: 94°19'30.29934"W

Mapping Angle: -0°33'33"

Combination Scale Factor: 0.999900680

Monument Type: Berntsen Top Security Rod Monument with a 2-1/2" dia. domed survey cap and permanent magnet encased in a 5" dia. PVC pipe with a NGS style aluminum access cover.



This document was prepared by DCI and GBC for use by Humboldt County, Iowa