

Reprinted on 10-29-2008  
Humboldt County, Iowa  
Iowa North Zone (1401)  
Horiz. Datum: NAD83(1996)  
Vert. Datum: NAVD 1988  
US Survey Feet  
2006

Point Name: 31

Designation: 2006 -031 Humboldt County GPS Control Pt.

Northing: 3731866.46sft Easting: 4683834.96sft

Orthometric Height: 1160.55sft Ellipsoid Height: 1065.16sft Geoid03

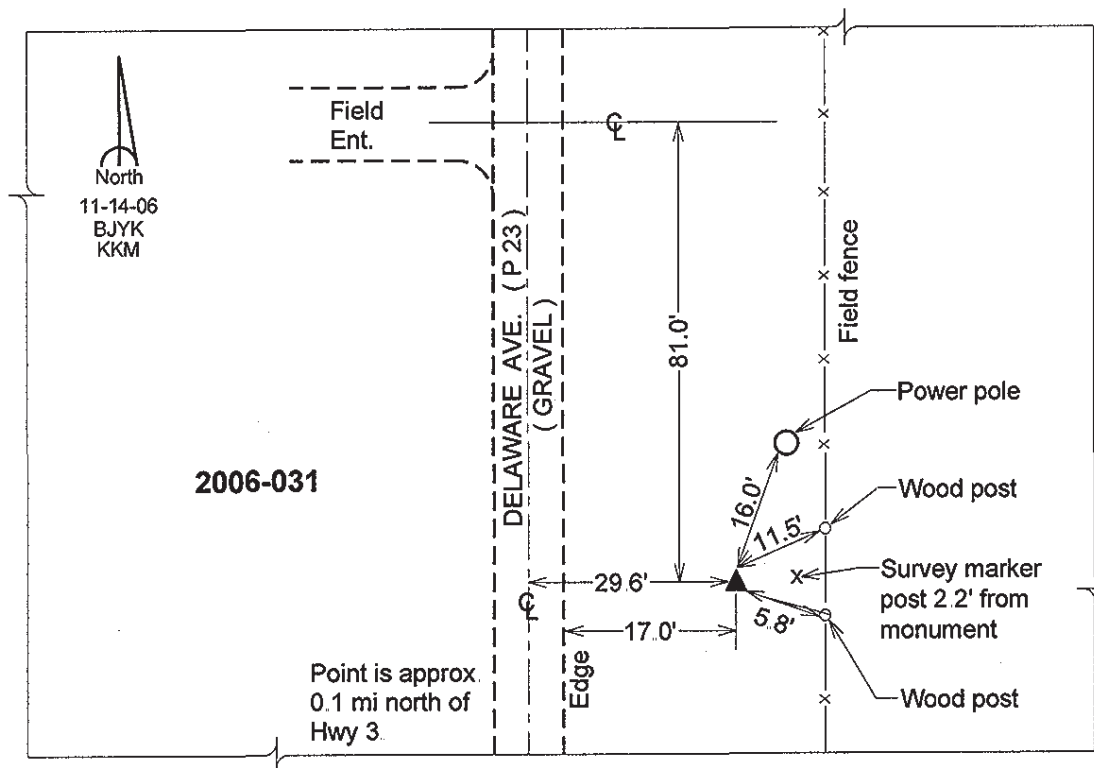
Latitude: 42°44'03.31658"N

Longitude: 94°23'01.40620"W

Mapping Angle: -0°35'56"

Combination Scale Factor: 0.999895220

**Monument Type:** Berntsen Top Security Rod Monument with a 2-1/2" dia. domed survey cap and permanent magnet encased in a 5" dia. PVC pipe with a NGS style aluminum access cover.



This document was prepared by DCI and GBC for use by Humboldt County, Iowa