

Reprinted on 10-29-2008  
**Humboldt County, Iowa**  
 Iowa North Zone (1401)  
 Horiz. Datum: NAD83(1996)  
 Vert. Datum: NAVD 1988  
 US Survey Feet  
**2006**

Point Name: **32**

**Designation:** 2006 -032 Humboldt County GPS Control Pt.

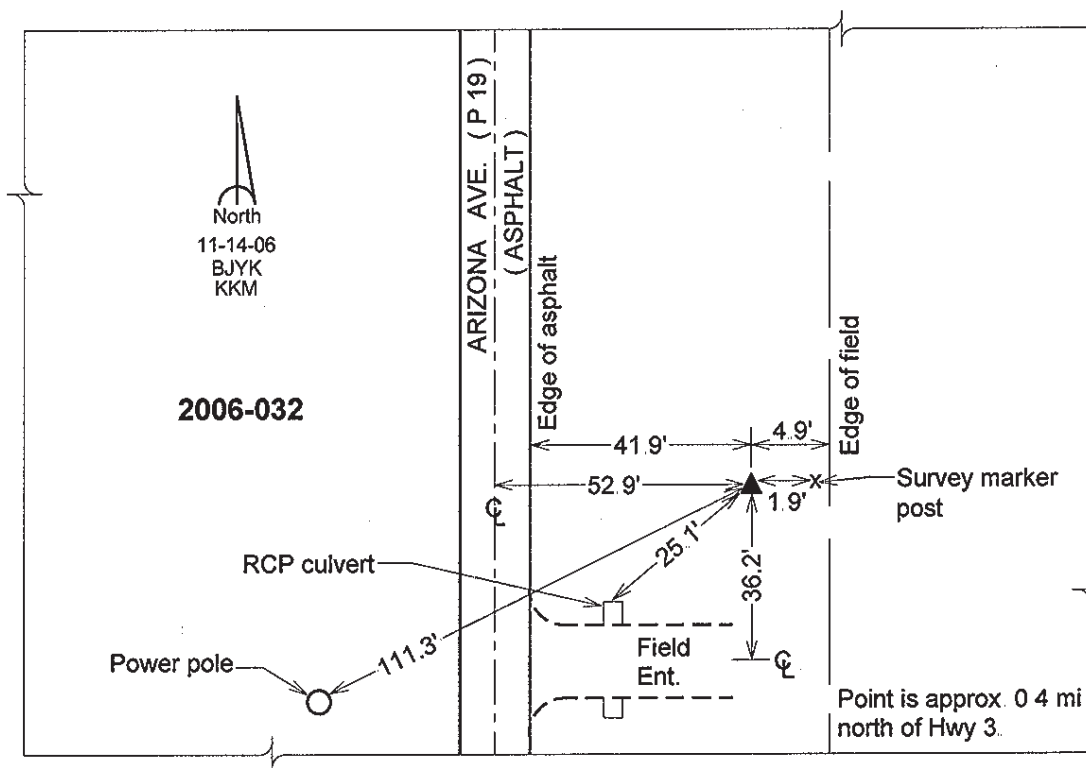
Northing: **3733663.43sft** Easting: **4667936.22sft**

Orthometric Height: **1230.67sft** Ellipsoid Height: **1135.41sft** **Geoid03**

Latitude: **42°44'19.36960"N** Longitude: **94°26'34.70367"W**

Mapping Angle: **-0°38'21"** Combination Scale Factor: **0.999891960**

**Monument Type:** Berntsen Top Security Rod Monument with a 2-1/2" dia. domed survey cap and permanent magnet encased in a 5" dia. PVC pipe with a NGS style aluminum access cover.



*This document was prepared by DCI and GBC for use by Humboldt County, Iowa*