

Reprinted on 10-29-2008  
**Humboldt County, Iowa**  
 Iowa North Zone (1401)  
 Horiz. Datum: NAD83(1996)  
 Vert. Datum: NAVD 1988  
 US Survey Feet  
 2006

Point Name: **33**

**Designation:** 2006 -033 Humboldt County GPS Control Pt.

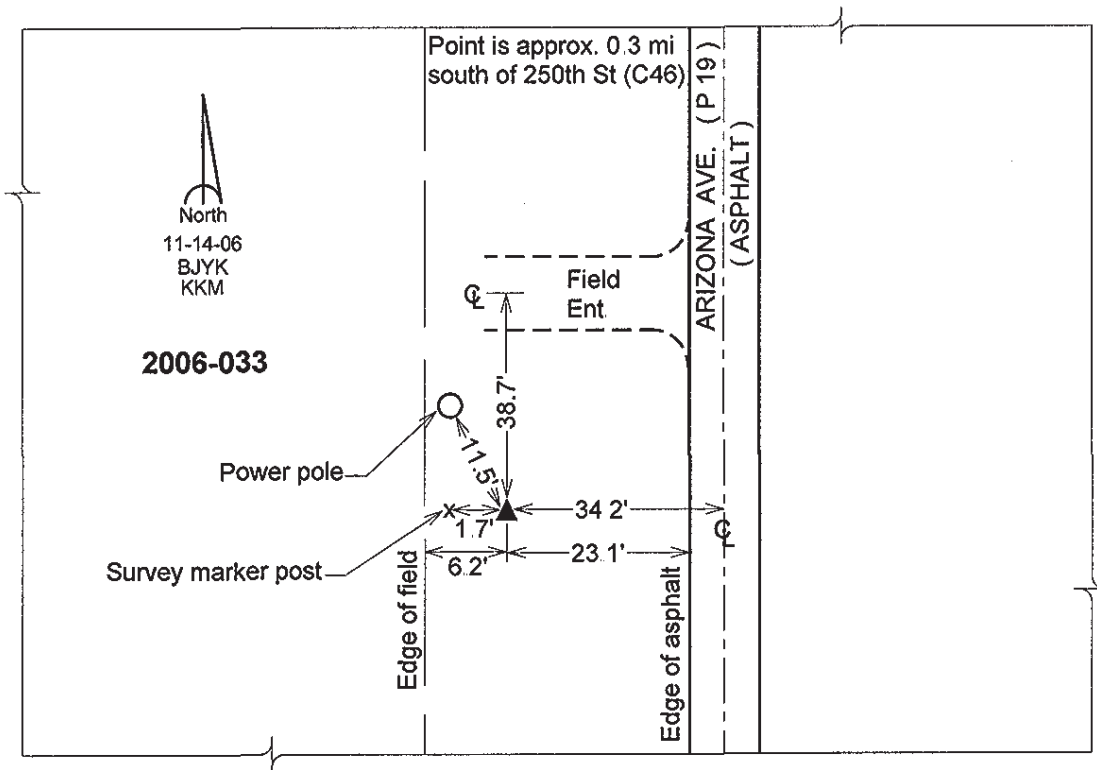
Northing: **3713700.12sft** Easting: **4667680.55sft**

Orthometric Height: **1211.12sft** Ellipsoid Height: **1115.71sft** **Geoid03**

Latitude: **42°41'02.15192"N** Longitude: **94°26'35.14529"W**

Mapping Angle: **-0°38'21"** Combination Scale Factor: **0.999892180**

**Monument Type:** Berntsen Top Security Rod Monument with a 2-1/2" dia. domed survey cap and permanent magnet encased in a 5" dia. PVC pipe with a NGS style aluminum access cover.



*This document was prepared by DCI and GBC for use by Humboldt County, Iowa.*