

Reprinted on 10-29-2008
Humboldt County, Iowa
 Iowa North Zone (1401)
 Horiz. Datum: NAD83(1996)
 Vert. Datum: NAVD 1988
 US Survey Feet
2006

Point Name: **35**

Designation: 2006 -035 Humboldt County GPS Control Pt.

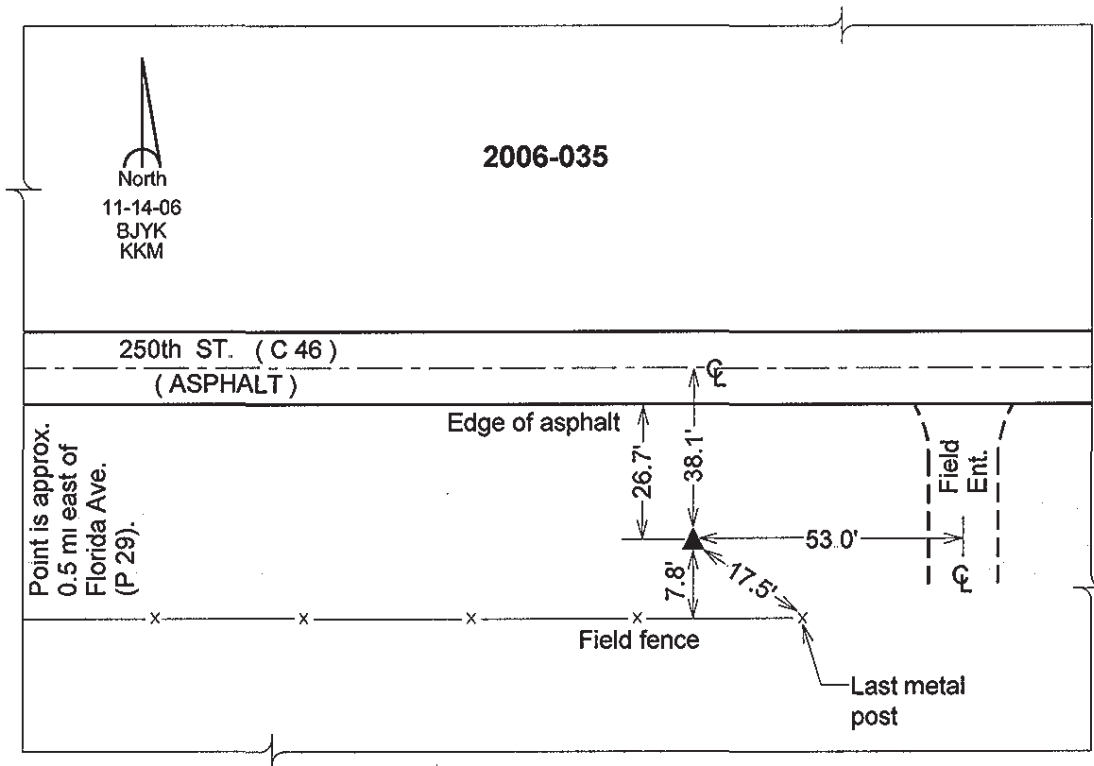
Northing: **3714950.77**sft Easting: **4696554.61**sft

Orthometric Height: **1158.35**sft Ellipsoid Height: **1062.98**sft **Geoid03**

Latitude: **42°41'17.50626"N** Longitude: **94°20'08.73100"W**

Mapping Angle: **-0°33'59"** Combination Scale Factor: **0.999894720**

Monument Type: Berntsen Top Security Rod Monument with a 2-1/2" dia. domed survey cap and permanent magnet encased in a 5" dia. PVC pipe with a NGS style aluminum access cover.



This document was prepared by DCI and GBC for use by Humboldt County, Iowa.