

Reprinted on 10-29-2008
Humboldt County, Iowa
 Iowa North Zone (1401)
 Horiz. Datum: NAD83(1996)
 Vert. Datum: NAVD 1988
 US Survey Feet
 2006

Point Name: **37**

Designation: 2006 -037 Humboldt County GPS Control Pt.

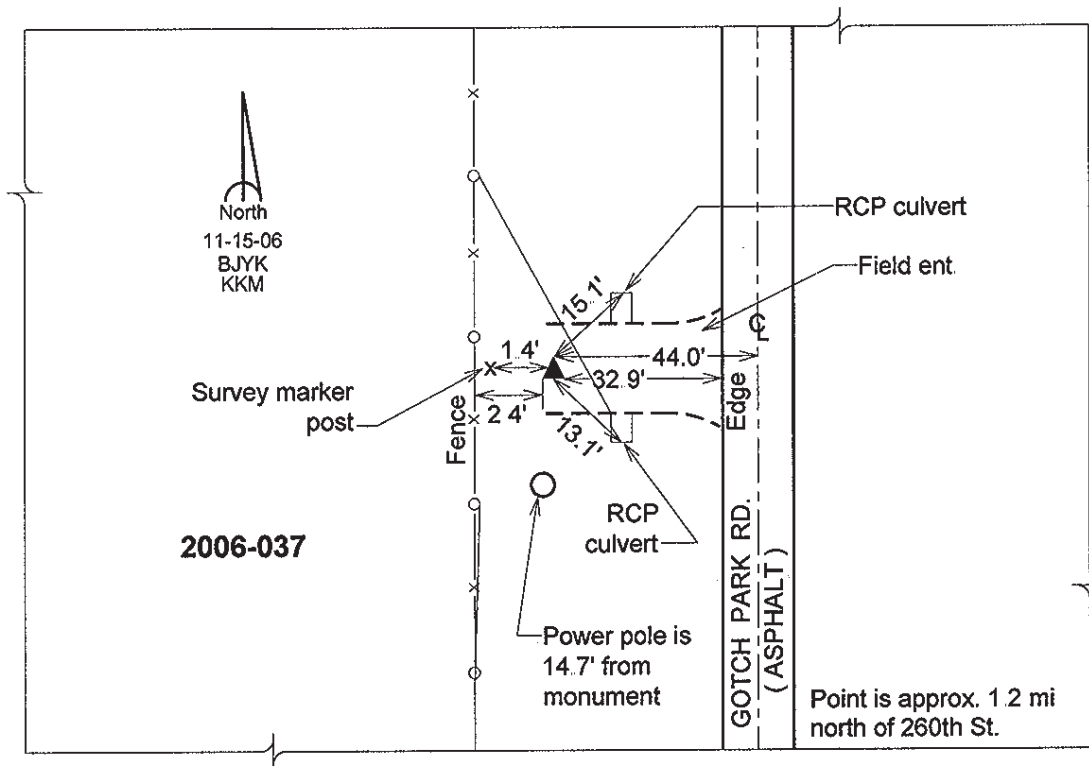
Northing: **3715822.74sft** Easting: **4731078.98sft**

Orthometric Height: **1112.33sft** Ellipsoid Height: **1017.27sft** **Geoid03**

Latitude: **42°41'29.23196"N** Longitude: **94°12'26.56175"W**

Mapping Angle: **-0°28'46"** Combination Scale Factor: **0.999896920**

Monument Type: Berntsen Top Security Rod Monument with a 2-1/2" dia. domed survey cap and permanent magnet encased in a 5" dia. PVC pipe with a NGS style aluminum access cover.



This document was prepared by DCI and GBC for use by Humboldt County, Iowa.